



# COMMERCIAL PRODUCT CATALOG





Product Information Sheets & Catalog Changes Enclosed

# table of contents

## **UPRIGHT BROOMS..... 1**

Synthetic Fiber Upright Brooms .....	2-3
Corn Brooms .....	3

## **DUST PANS & ACCESSORIES..... 4**

Upright Lobby Dust Pan & Broom .....	5
Dust Pans & Brush Sets .....	6-7

## **PUSH BROOMS ..... 8**

Threaded Push Brooms.....	9
Heavy Duty Assembled Push Brooms .....	10
Industrial-Grade Assembled Push Brooms .....	11
Handles.....	11

## **BRUSHES/SCRUBS ..... 12**

Floor/Surface Scrubs.....	13
Multi-Purpose Brushes.....	14-16
Toilet Brushes & Caddies .....	16-17

## **MOPS, BUCKETS & FLOOR CLEANERS ..... 18**

Spray Mops .....	19
Heavy Duty Twist Mops .....	19
Light Duty Twist Mops .....	19
Deck Mops.....	20
Wet Mop Heads & Handles .....	21-22
Mop & Utility Buckets .....	23
Heavy Duty Sponge Mops .....	24
Light Duty Sponge Mops.....	24
Dust Mops & Accessories .....	25-26
Floor Liquid Cleaners.....	27

## **HOUSEKEEPING TOOLS ..... 28**

Screw-On Dusters.....	29
Dust Removal Tools .....	29-30
Handheld Dusters .....	30
Microfiber Cloths .....	31
Wipes, Cloths & Microfiber Sponges .....	31

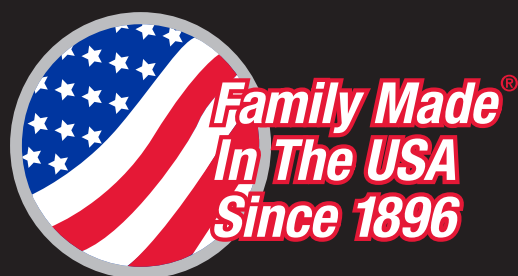
## **KITCHEN TOOLS ..... 32**

Sponges & Scrubs .....	33-34
Grill Brushes .....	35
Kitchen Brushes.....	36
Soap Dispensers .....	37

## **SQUEEGEES & VEHICLE WASH ..... 38**

Floor Squeegees .....	39
Window Squeegees .....	40
Window Liquid Cleaners & Buckets.....	41
Tapered Handles & Extension Handles .....	42
Vehicle Wash Brushes & Accessories .....	43

## **INDEX ..... 44-46**





**Product is made from recycled PET  
and/or partially recycled steel**

# upright brooms



**Libman synthetic fiber upright brooms are made in the USA with durable, recycled steel handles and polymer bristles made from recycled PET.**



**#00997**  
**Wide Commercial Angle Broom**



- 15" wide broom with 55" total height.
- 1" steel handle with handle grip and hanger hole.
- 6" long staple-set, flagged fibers.
- Solid, one-piece resin block.
- Firm but flexible, long-lasting fibers, made with recycled PET.
- Excellent for all multi-surface applications.

Case Pack	Weight	Case Dimensions
6	12.86	55.38 x 15.13 x 4.50



**#00994**  
**Commercial Angle Broom**



- 13" wide broom with 53" total height.
- 1" steel handle with handle grip and hanger hole.
- 5" long staple-set, flagged fibers.
- Solid, one-piece resin block.
- Firm but flexible, long-lasting fibers, made with recycled PET.
- Excellent for stiff/wet sweep applications, including food service.

Case Pack	Weight	Case Dimensions
6	11.70	55.00 x 15.13 x 4.50



**#00915**  
**Lobby Broom**



- 10" wide broom with 38" total height.
- 3/4" steel handle with handle grip and hanger hole.
- 4.25" long staple-set, flagged fibers.
- Solid, one-piece resin block.
- Stiffer and wider than most lobby brooms.
- Excellent for quick pick-ups in retail locations, parking lots, and more.

Case Pack	Weight	Case Dimensions
6	6.30	41.75 x 11.25 x 4.25



**#00499**  
**Housekeeper Broom**



- 10" wide broom with 54" total height.
- 3/4" steel handle with handle grip and hanger hole.
- 4.25" long staple-set, flagged fibers.
- Solid, one-piece resin block.
- Firm but flexible, long-lasting fibers, made with recycled PET.
- Excellent for a cost-effective option for all multi-surface applications, including hotels.

Case Pack	Weight	Case Dimensions
6	7.58	54.38 x 12.13 x 4.00



**#00201**  
**Precision® Angle Broom**



- 11" wide broom with 53" total height.
- 3/4" steel handle with handle grip and hanger hole.
- 5" long staple-set, flagged fibers.
- Solid, one-piece resin block.
- Firm but flexible, long-lasting fibers, made with recycled PET.
- Excellent for all housekeeping needs.

Case Pack	Weight	Case Dimensions
6	8.32	53.25 x 11.63 x 3.75



**#00206**  
**Precision® Angle Broom with Dust Pan**



- 11" wide broom with 53" total height.
- 3/4" steel handle with handle grip and hanger hole.
- 5" long staple-set, flagged fibers.
- Solid, one-piece resin block.
- Firm but flexible, long-lasting fibers, made with recycled PET.
- Includes 10" snap-on dust pan.
- Excellent for all housekeeping needs.

Case Pack	Weight	Case Dimensions
4	6.74	52.63 x 11.50 x 3.75



**#00205**  
**Large Precision® Angle Broom**



- 13" wide angle broom with 54" total height.
- 3/4" steel handle with handle grip and hanger hole.
- 6" long staple-set, flagged fibers.
- Solid, one-piece resin block.
- Firm but flexible, long-lasting fibers, made with recycled PET.
- Excellent for all housekeeping needs.

Case Pack	Weight	Case Dimensions
6	10.18	56.88 x 13.88 x 4.13



**#00248**  
**Large Precision® Angle Broom with Dust Pan**



- 13" wide angle broom with 54" total height.
- 3/4" steel handle with handle grip and hanger hole.
- 6" long staple-set, flagged fibers.
- Solid, one-piece resin block.
- Firm but flexible, long-lasting fibers, made with recycled PET.
- Includes 13" snap-on dust pan.
- Excellent for all housekeeping needs.

Case Pack	Weight	Case Dimensions
4	8.58	55.63 x 13.88 x 5.00



**#00211**  
**Extra Large Precision® Angle Broom**



- 15" wide angle broom with 54" total height.
- 3/4" steel handle with handle grip and hanger hole.
- 6" long staple-set, flagged fibers.
- Solid, one-piece resin block.
- Firm but flexible, long-lasting fibers, made with recycled PET.
- Excellent for all housekeeping needs.

Case Pack	Weight	Case Dimensions
4	8.56	54.75 x 14.75 x 3.13



**It's not just a company.  
It's our family name.**



**The Libman Company started in 1896 by  
selling corn brooms from a push cart.**



**#00502**  
**Janitor Corn Broom**



- 12.5" wide sweeping surface with 57" total height.
- 1" steel handle with handle grip and hanger hole.
- 15-ply polymer thread and 5 rows of stitching.
- 100% natural broom corn.
- True weight corn broom.
- Excellent for all multi-surface applications, including warehouse/dock floors and all varied surfaces.

Case Pack	Weight	Case Dimensions
6	11.86	57.50 x 11.88 x 7.25



**#00101**  
**Traditional Corn Broom**



- 11" wide sweeping surface with 53" total height.
- 1" steel handle with handle grip and hanger hole.
- 15-ply polymer thread and 4 rows of stitching.
- 100% natural broom corn.
- True weight corn broom.
- Excellent for all light duty indoor or outdoor applications.

Case Pack	Weight	Case Dimensions
6	8.63	53.63 x 9.63 x 5.25



**Product is made with extra wall thickness  
to resist cracking and breaking**

# dust pans & accessories



# Libman lobby brooms are firm, flexible and wider than others, making them top selling items.



## #00919 Lobby Dust Pan & Broom (Open Lid)



- 12" wide dust pan. 36" tall when open.
- Combo unit with #915 lobby broom.
- Broom stores inside pan and clips to handle.
- Handle grip has hanger hole.
- Locks in upright position for easy storage.
- Built-in tilt when open allows user to leave open.
- Perfect for all "on-the-move" applications.

Case Pack	Weight	Case Dimensions
2	6.74	41.75 x 12.13 x 7.63



## #00918 Lobby Dust Pan (Open Lid)



- 12" wide dust pan. 36" tall when open.
- Open lid lobby pan only.
- Ships fully-assembled.
- Handle grip has hanger hole.
- Locks in upright position for easy storage.
- Built-in tilt when open allows user to leave open.
- Perfect for all "on-the-move" applications.

Case Pack	Weight	Case Dimensions
2	5.00	42.00 x 11.25 x 7.50



## #00917 Lobby Dust Pan & Broom (Closed Lid)



- 12" wide dust pan. 36" tall when open.
- Combo unit with #915 lobby broom.
- Broom stores inside pan and clips to handle.
- Handle grip has hanger hole.
- Locks in upright position for easy storage.
- Most common in food service and hospitality applications as lid hides debris inside.
- Perfect for all "on-the-move" applications.

Case Pack	Weight	Case Dimensions
2	7.38	42.00 x 11.25 x 7.50



## #00916 Lobby Dust Pan (Closed Lid)



- 12" wide dust pan. 36" tall when open.
- Closed lid lobby pan only.
- Ships fully-assembled.
- Handle grip has hanger hole.
- Locks in upright position for easy storage.
- Most common in food service and hospitality applications as lid hides debris inside.
- Perfect for all "on-the-move" applications.

Case Pack	Weight	Case Dimensions
2	5.60	42.00 x 11.25 x 7.50



## #00929 Outdoor/Shop Scoop



- 22" wide scoop. Oversized, 5.5" deep well.
- 33.5" telescopic steel handle.
- Hanger hole for storage.
- Durable hard resin design.
- Great for industrial/warehouse/shop and construction clean-up.

Case Pack	Weight	Case Dimensions
3	8.26	23.63 x 22.25 x 8.25



## #02120 Upright Dust Pan



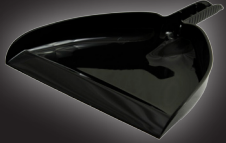
- 11" wide scoop. 2.5" deep well.
- 34" tall when assembled.
- 1.5" long "teeth" remove debris from broom fibers.
- Pivot head for easy shipping and storage, snaps into place.
- Handle grip has hanger hole.

Case Pack	Weight	Case Dimensions
4	3.50	43.31 x 12.00 x 6.38

# Libman dust pans for every application, from quick pick-ups, to industrial clean-up needs.



## #00928 13" Dust Pan - Black

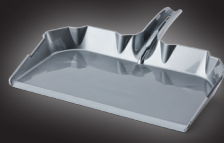


- 13" wide scoop.
- Snaps onto broom and push broom handles for easy storage.
- Hanger hole for easy storage.
- Black polymer pan.
- 2" deep well.

Case Pack	Weight	Case Dimensions
12	6.34	13.50 x 13.25 x 15.25



## #00581 Industrial Grade Dust Pan



- Super durable polypropylene molded.
- 17" wide scoop.
- Hanger hole for easy storage.
- Safer, 3x stronger, and more environmentally friendly than steel dust pans.
- Withstands more than 530 lbs; reinforced to maintain shape; will not crack.
- 2.5" deep well.
- Molded "teeth" remove debris from broom fibers.

Case Pack	Weight	Case Dimensions
6	12.14	18.50 x 18.13 x 18.50



## #00911 13" Dust Pan - Red

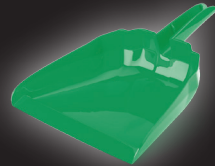


- 13" wide scoop.
- Snaps onto all Libman handles.
- Hanger hole for easy storage.
- Red polymer pan.
- 3.50" deep well.

Case Pack	Weight	Case Dimensions
6	3.74	16.38 x 13.88 x 8.13



## #00238 13" Dust Pan - Green



- 13" wide scoop.
- Snaps onto all Libman handles.
- Hanger hole for easy storage.
- Green polymer pan.
- 3.50" deep well.

Case Pack	Weight	Case Dimensions
6	4.20	16.25 x 13.88 x 8.13



## #00228 10" Dust Pan - Deep Well



- 10" wide scoop.
- Snaps onto all Libman handles.
- Hanger hole for easy storage.
- White polymer pan.
- 2.75" oversized deep well that holds more debris.

Case Pack	Weight	Case Dimensions
12	6.00	11.63 x 11.00 x 15.88



## #00229 10" Dust Pan



- 10" wide scoop.
- Ribbed handle grip.
- Snaps onto all Libman handles.
- Hanger hole for easy storage.
- White polymer pan.
- Dust pan used with #206 set.
- 1.75" deep well.

Case Pack	Weight	Case Dimensions
12	3.96	11.88 x 11.00 x 13.88

## Libman brush & whisk sets are key to any maintenance kit or cart.



### #00906 Dust Pan with Whisk Broom



- 10" dust pan together with item #907.
- 42 tufts of flexible, split-tip polymer fibers pick up fine particles.
- Ergonomic handle.
- Hanger hole for easy storage.
- Whisk snaps into dust pan.
- Ideal design for any maintenance kit.
- 2.25" deep well.

Case Pack	Weight	Case Dimensions
6	4.44	15.25 x 10.63 x 12.63



### #01031 Dust Pan with Whisk Broom



- 10" dust pan together with item #1030.
- 42 tufts of flexible, split-tip polymer fibers pick up fine particles.
- Ergonomic handle.
- Hanger hole for easy storage.
- Whisk snaps into dust pan.
- Ideal design for any maintenance kit or maid's cart.
- 2.25" deep well.

Case Pack	Weight	Case Dimensions
6	4.36	15.25 x 10.38 x 12.50



### #00907 Whisk Broom #01030 Whisk Broom



#907



#1030

- 7" wide sweeping surface.
- 42 tufts of flexible, split-tip polymer fibers pick up fine particles.
- Ergonomic handle.
- Hanger hole for easy storage.
- Excellent for sweeping up saw dust and other fine particles.

Case Pack	Weight	Case Dimensions
6	2.60	11.00 x 6.38 x 7.75



### #00095 Dust Pan and Brush Set



- 9.5" dust pan together with #231.
- 2.5" x 7" oval head for getting into corners.
- 96 tufts of soft, durable 2" polymer fibers.
- Ergonomic rubbergrip handle.
- Hanger hole for easy storage.
- Brush snaps into dust pan.
- Teeth on dust pan allow hands-free brush cleaning.
- Excellent for quick pick ups.
- 1.75" deep well.

Case Pack	Weight	Case Dimensions
2	2.42	19.63 x 10.25 x 5.88



### #00526 Counter/Bench Brush - Red #01019 Counter/Bench Brush - Black



#526



#1019

- 2.5" x 7" oval head for getting into corners.
- 96 tufts of soft, durable 2" polymer fibers.
- Ergonomic rubbergrip handle.
- Hanger hole for easy storage.
- Excellent for sweeping up dust and other fine particles.

Case Pack	Weight	Case Dimensions
6	2.82	13.50 x 6.75 x 5.75



### #00231 Shaped Duster Brush



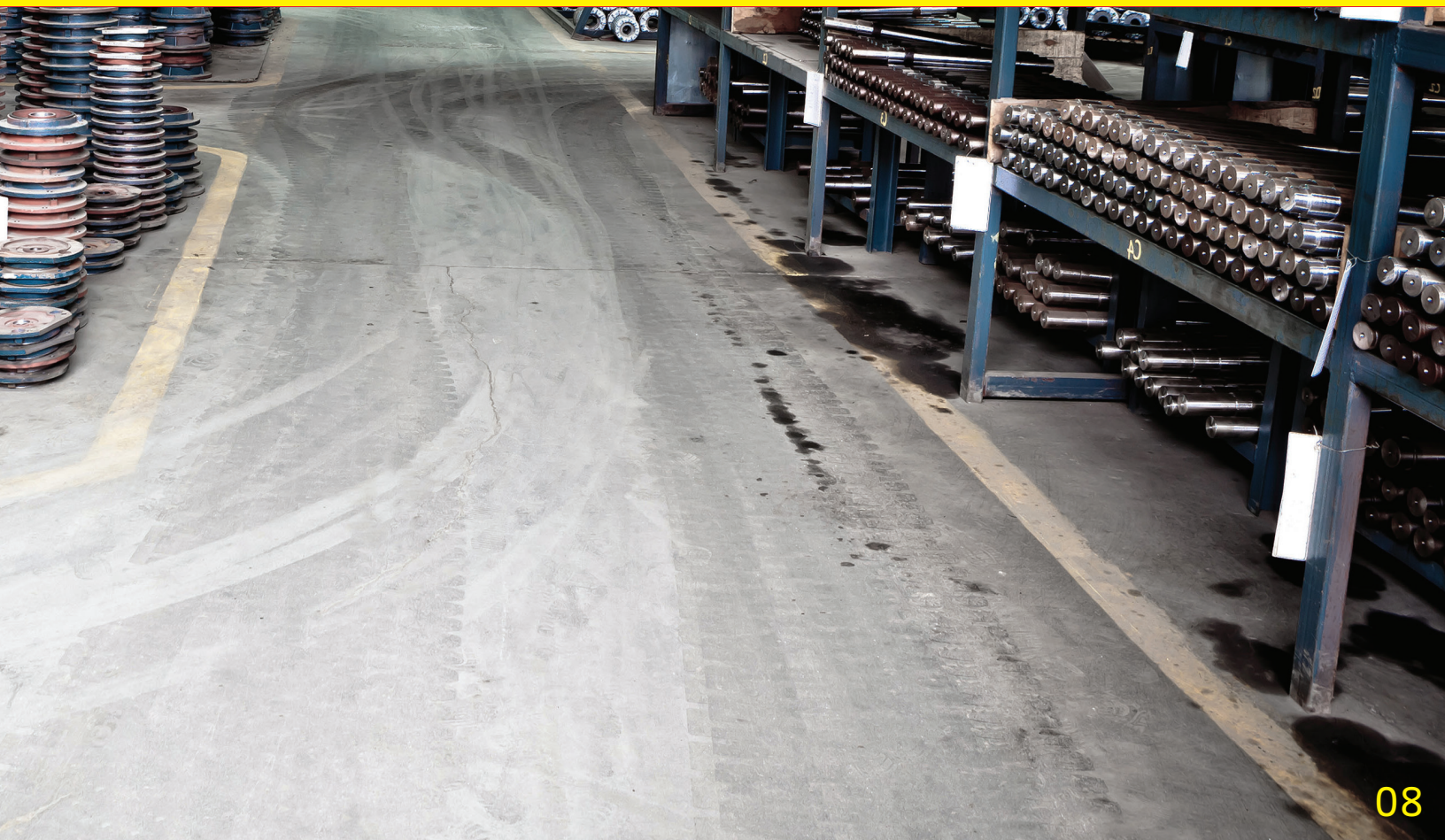
- 2.5" x 7" oval head for getting into corners.
- 96 tufts of soft, durable 2" polymer fibers.
- Ergonomic rubbergrip handle.
- Hanger hole for easy storage.
- Excellent for sweeping up dust and other fine particles.

Case Pack	Weight	Case Dimensions
6	2.82	13.50 x 6.75 x 5.75



Product is made from recycled PET  
and/or partially recycled steel

# push brooms



## Libman threaded push brooms are built with a locking bolt to prevent loosening of handles.



**#00805**

### 24" Multi-Surface Push Broom



- 24" polymer broom block for durability and hygiene.
- 1" x 60" long steel, nylon thread handle with 5" handgrip, hanger hole and locking bolt.
- 3" long, combo of firm and flexible split tip recycled PET, staple-set fibers.
- Resin bolt locks handle in place.
- Excellent for all multi-surface applications.

Case Pack	Weight	Case Dimensions
4	14.34	60.00 x 7.25 x 6.50



**#00804**

### 18" Multi-Surface Push Broom



- 18" polymer broom block for durability and hygiene.
- 1" x 60" long steel, nylon thread handle with 5" handgrip, hanger hole and locking bolt.
- 3" long, combo of firm and flexible split tip recycled PET, staple-set fibers.
- Resin bolt locks handle in place.
- Excellent for all multi-surface applications.

Case Pack	Weight	Case Dimensions
4	12.42	60.00 x 7.25 x 6.50



**#00879**

### 24" Rough Surface Push Broom



- 24" polymer broom block for durability and hygiene.
- 1" x 60" long steel, nylon thread handle with 5" handgrip, hanger hole and locking bolt.
- 4" long, stiff, recycled PET, staple-set fibers.
- Resin bolt locks handle in place.
- Excellent for tough industrial clean-ups and outdoor applications.

Case Pack	Weight	Case Dimensions
4	15.54	60.00 x 8.00 x 7.50



**#00878**

### 18" Rough Surface Push Broom



- 18" polymer broom block for durability and hygiene.
- 1" x 60" long steel, nylon thread handle with 5" handgrip, hanger hole and locking bolt.
- 4" long, stiff, recycled PET, staple-set fibers.
- Resin bolt locks handle in place.
- Excellent for tough industrial clean-ups and outdoor applications.

Case Pack	Weight	Case Dimensions
4	13.76	60.00 x 8.00 x 7.50



**#00801**

### 24" Smooth Surface Push Broom



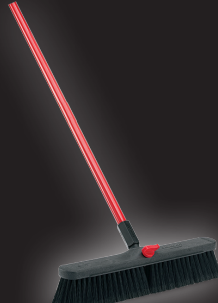
- 24" polymer broom block for durability and hygiene.
- 1" x 60" long steel, nylon thread handle with 5" handgrip, hanger hole and locking bolt.
- 3" long, soft, recycled PET, staple-set fibers.
- Resin bolt locks handle in place.
- Excellent for smooth concrete floors in warehouses and factories.

Case Pack	Weight	Case Dimensions
4	14.50	60.00 x 7.25 x 6.50



**#00800**

### 18" Smooth Surface Push Broom



- 18" polymer broom block for durability and hygiene.
- 1" x 60" long steel, nylon thread handle with 5" handgrip, hanger hole and locking bolt.
- 3" long, soft, recycled PET, staple-set fibers.
- Resin bolt locks handle in place.
- Excellent for smooth concrete floors in warehouses and factories.

Case Pack	Weight	Case Dimensions
4	12.18	60.00 x 7.25 x 6.50

**Libman heavy duty assembled push brooms are made in the USA with proprietary heavy duty resin brackets that provide extra leverage and durability.**



**#00823**

**24" Multi-Surface Heavy Duty Push Broom**



- 24" polymer broom block for durability and hygiene.
- 1" x 60" long steel, nylon thread handle with 5" handgrip and hanger hole.
- 3" long, combo of firm and flexible split tip recycled PET, staple-set fibers.
- Super tough polymer brace won't rust or bend.
- Excellent for all tough multi-surface applications.

Case Pack	Weight	Case Dimensions
4	14.94	68.38 x 23.50 x 10.75



**#00824**

**18" Multi-Surface Heavy Duty Push Broom**



- 18" polymer broom block for durability and hygiene.
- 1" x 60" long steel, nylon thread handle with 5" handgrip and hanger hole.
- 3" long, combo of firm and flexible split tip recycled PET, staple-set fibers.
- Super tough polymer brace won't rust or bend.
- Excellent for all tough multi-surface applications.

Case Pack	Weight	Case Dimensions
4	12.30	67.68 x 18.25 x 10.75



**#00825**

**24" Rough Surface Heavy Duty Push Broom**



- 24" polymer broom block for durability and hygiene.
- 1" x 60" long steel, nylon thread handle with 5" handgrip and hanger hole.
- 4" long, stiff, recycled PET, staple-set fibers.
- Super tough polymer brace won't rust or bend.
- Excellent for non-slip/non-skid surfaces and all textured and varied surfaces.

Case Pack	Weight	Case Dimensions
4	15.68	68.00 x 24.38 x 11.75



**#00826**

**18" Rough Surface Heavy Duty Push Broom**



- 18" polymer broom block for durability and hygiene.
- 1" x 60" long steel, nylon thread handle with 5" handgrip and hanger hole.
- 4" long, stiff, recycled PET, staple-set fibers.
- Super tough polymer brace won't rust or bend.
- Excellent for non-slip/non-skid surfaces and all textured and varied surfaces.

Case Pack	Weight	Case Dimensions
4	13.00	68.38 x 18.13 x 11.75



**#00850**

**36" Smooth Surface Heavy Duty Push Broom**



- 36" natural hardwood broom block.
- 1" x 60" long steel, nylon thread handle with 5" handgrip and hanger hole.
- 3" long, soft, recycled PET, staple-set fibers.
- Super tough polymer brace won't rust or bend.
- Flagged fibers pick up fine dirt & dust.
- Excellent for large spaces, such as warehouse and factory floors.

Case Pack	Weight	Case Dimensions
4	20.94	67.00 x 36.63 x 12.50



**#01101**

**36" Multi-Surface Heavy Duty Push Broom**



- 36" natural hardwood broom block.
- 1" x 60" long steel, nylon thread handle with 5" handgrip and hanger hole.
- 3" long, combo of firm and flexible split tip recycled PET, staple-set fibers.
- Super tough polymer brace won't rust or bend.
- Flagged fibers pick up all particle types.
- Excellent for large spaces, including all surface types.

Case Pack	Weight	Case Dimensions
4	20.94	67.00 x 36.63 x 12.50

# Libman push brooms provide superior sweeping performance due to maximum fiber fill quantity.



## #00827 24" Multi-Surface Industrial Push Broom



- 24" polymer broom block for durability and hygiene.
- 1 1/8" x 60" long wood handle and 15" ergonomic grip with 66" overall length.
- 4" long, combo of firm and flexible split tip recycled PET, staple-set fibers.
- Super tough polymer brace won't rust or bend.
- Ergonomic grip allows for upright sweeping to minimize user fatigue.

Case Pack	Weight	Case Dimensions
4	19.92	72.38 x 24.25 x 11.75



## #00829 24" Rough Surface Industrial Push Broom



- 24" polymer broom block for durability and hygiene.
- 1 1/8" x 60" long wood handle and 15" ergonomic grip with 66" overall length.
- 4" long, stiff, recycled PET, staple-set fibers.
- Super tough polymer brace won't rust or bend.
- Ergonomic grip allows for upright sweeping to minimize user fatigue.

Case Pack	Weight	Case Dimensions
4	19.34	72.38 x 24.38 x 11.75



## #00847 24" Smooth Surface Industrial Push Broom



- 24" polymer broom block for durability and hygiene.
- 1 1/8" x 60" long wood handle and 15" ergonomic grip with 66" overall length.
- 3" long, soft, recycled PET, staple-set fibers.
- Super tough polymer brace won't rust or bend.
- Ergonomic grip allows for upright sweeping to minimize user fatigue.

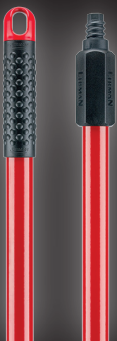
Case Pack	Weight	Case Dimensions
4	17.94	70.00 x 24.75 x 13.75



It's not just a company.  
It's our family name.



## #00601 60" Steel Handle



- 1" thick steel handle.
- 60" long with 5" handle grip.
- Hanger hole for easy storage.
- Durable nylon standard thread.
- Replacement handle for all Libman resin block, threaded push brooms, floor scrubs and vehicle wash brushes.

Case Pack	Weight	Case Dimensions
12	11.74	61.38 x 6.25 x 4.13

## #00602 60" Zinc Thread Wood Handle



- 1" thick wood handle.
- Hardwood with zinc thread, 60" long.
- Clear lacquer finish.
- Standard thread can be used on any maintenance tool.

Case Pack	Weight	Case Dimensions
12	14.62	60.63 x 4.38 x 2.75



Product is made from recycled PET  
and/or partially recycled steel

brushes/scrubs



**Libman is the only brand manufacturing all steel handles, extruded fibers and injection molded parts in the U.S.A.**



**#00547  
Floor Scrub**



- 10.5" x 3.5" scrubbing surface.
- 3/4" thick steel handle with handle grip and hanger hole.
- 1.5" long, recycled PET fibers, 10" wide scraper.
- Total height of 52".
- Stiff unflagged fibers remove debris from cracks and rough surfaces.
- Can also use 60" handles such as the #601.
- Available head only as #00507.

Case Pack	Weight	Case Dimensions
6	9.48	60.75 x 6.00 x 4.00



**#00532  
Dual Surface Scrub Brush**



- 10" x 6.5" dual-sided scrubbing surface.
- 1" thick steel handle with handle grip and hanger hole.
- 3.5" long, recycled PET fibers.
- Total height of 55".
- Great for all scrubbing applications including grout cleaning.
- Available head only as #00516.
- Libman #601 is the replacement handle.

Case Pack	Weight	Case Dimensions
6	15.70	59.25 x 14.50 x 10.13



**#00548  
Acid Brush**



- 8.5" x 3.5" scrubbing surface.
- 3/4" thick steel handle with handle grip and hanger hole.
- 1" long, natural tampico fibers, 8" wide scraper.
- Total height of 52".
- Flat head removes water and dirt out of cracks and rough surfaces.
- Withstands harsh chemicals, strippers and acids.
- Can also use 60" handles such as the #601.
- Available head only as #00508.

Case Pack	Weight	Case Dimensions
6	7.96	49.88 x 5.63 x 3.63



**#00549  
Tampico Floor Scrub**

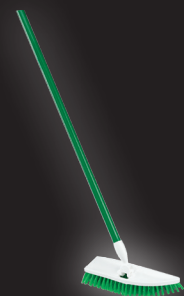


- 8.5" x 3.5" scrubbing surface.
- 3/4" thick steel handle with handle grip and hanger hole.
- 1.5" long, natural tampico fibers, 8" wide scraper.
- Total height of 52".
- Withstands harsh chemicals, strippers and acids.
- Can also use 60" handles such as the #601.
- Available head only as #00509.

Case Pack	Weight	Case Dimensions
6	8.40	49.88 x 5.63 x 3.63



**#00122  
No Knees Floor Scrub**



- 11" x 4" scrubbing surface with an angled head to get into corners.
- 10.5" long x 3" wide head with 1.25" long bristles.
- 3/4" thick steel handle with handle grip and hanger hole.
- Tough scrubber, attached to handle allowing for floor scrubbing without bending over.
- Head pivots 180 degrees.
- Excellent for bathrooms, kitchens, and other spaces requiring tough scrubbing.

Case Pack	Weight	Case Dimensions
4	6.19	56.13 x 9.63 x 5.13



**#00603  
Steel Handle**



- 3/4" thick steel handle.
- 48.5" long with 5" handle grip.
- Hanger hole for easy storage.
- Durable nylon standard thread.
- Replacement handle for Libman scrubs #00547-00549.

Case Pack	Weight	Case Dimensions
12	7.20	49.88 x 4.50 x 3.38

# Libman's custom, dual-molded sanoprene handle grips are unique in the industry.



## #00057 Power Scrub Brush



- 95 tufts of 1" long, recycled PET, staple-set fibers.
- 7" x 2.5" scrubbing surface with pointed end for corners.
- Comfortable contoured grip handle with easy-grip open end and hanger hole.
- Fibers are not flagged to withstand heavier debris and varied surfaces.

Case Pack	Weight	Case Dimensions
6	2.26	13.63 x 7.25 x 4.41



## #00567 Big Scrub Brush



- 164 tufts of 1.25" long, recycled PET, staple-set fibers.
- 8" x 3.5" pointed scrubbing surface.
- Ergonomic grip with extra knuckle room and hanger hole.
- Fibers are not flagged to withstand heavier debris and varied surfaces.

Case Pack	Weight	Case Dimensions
4	3.04	10.00 x 9.00 x 5.13



## #00510 7" Scrub Brush



- 65 tufts of 1" long, recycled PET, staple-set fibers.
- 2.5" wide scraper.
- 2" x 7" scrubbing surface.
- Resin block shaped and grooved for easy gripping.
- Fibers are not flagged to withstand heavier debris and varied surfaces.

Case Pack	Weight	Case Dimensions
12	5.50	15.38 x 8.63 x 4.13



## #01090 Big Scrub Brush



- 164 tufts of 1.25" long, recycled PET, staple-set fibers.
- 8" x 3.5" pointed scrubbing surface.
- Ergonomic grip with extra knuckle room and hanger hole.
- Fibers are not flagged to withstand heavier debris and varied surfaces.

Case Pack	Weight	Case Dimensions
4	3.04	10.00 x 9.00 x 5.13



## #00513 9" Scrub Brush



- 86 tufts of 1.25" long, recycled PET, staple-set fibers.
- 2.5" wide scraper.
- 2" x 9" scrubbing surface.
- Resin block shaped and grooved for easy gripping.
- Fibers are not flagged to withstand heavier debris and varied surfaces.

Case Pack	Weight	Case Dimensions
12	6.28	16.25 x 11.25 x 4.88



## #00015 Small Scrub Brush



- 110 tufts of extra durable, 3/4" recycled PET, staple-set fibers.
- 1.75" x 4.5" scrubbing surface.
- Pointed head for getting into corners.
- Ergonomic rubbergrip handle with thumb rest and hanger hole.
- Great for spot clean-ups.

Case Pack	Weight	Case Dimensions
6	1.74	9.88 x 5.50 x 4.50



**#00018**  
**Tile & Grout Brush**



- 33 tufts of extra durable, 7/8" recycled PET, staple-set fibers.
- .56" x 3.5" scrubbing surface.
- Angled head for getting into tight spaces.
- Narrow brush design, excellent for grout.
- Ergonomic rubbergrip handle with hanger hole.

Case Pack	Weight	Case Dimensions
6	1.04	10.38 x 10.25 x 1.38

**#00061**  
**Tile & Tub Scrub**



- 5.88" x 3" non-woven, abrasive pad.
- Contoured grip handle.
- Excellent for tough bathroom cleaning.

Case Pack	Weight	Case Dimensions
6	1.60	8.00 x 6.25 x 6.63



**#00525**  
**Iron Handle Scrub Brush**



- 117 tufts of extra durable, 1.25" recycled PET, staple-set fibers.
- 1.38" wide scraper edge to remove stuck-on debris.
- 2.75" x 7.5" scrubbing surface.
- Ergonomic rubbergrip handle with hanger hole.

Case Pack	Weight	Case Dimensions
6	3.18	12.13 x 8.50 x 5.25



**#00016**  
**Easy Grip Scrub Brush**



- 117 tufts of extra durable, 1" recycled PET, staple-set fibers.
- 1.38" wide scraper edge to remove stuck-on debris.
- 2.75" x 7.5" scrubbing surface.
- Ergonomic rubbergrip handle with hanger hole.

Case Pack	Weight	Case Dimensions
6	3.18	12.13 x 8.50 x 5.25

**#00523**  
**Short Handle Tampico Scrub Brush**



- 68 tufts of 2" long, staple-set natural tampico fibers.
- 2.5" wide scraper edge for tough cleaning.
- 3.5" x 3.5" scrubbing surface.
- Ergonomic rubbergrip handle with hanger hole.
- Acid resistant fiber.

Case Pack	Weight	Case Dimensions
6	2.38	12.63 x 11.75 x 3.75



**#00524 Short Handle Utility Brush - Red**  
**#00054 Short Handle Utility Brush - White**



#524



#54

- 68 tufts of extra durable 1.5" long, recycled PET, staple-set fibers.
- 2.5" wide scraper edge for tough cleaning.
- 3.25" x 3.5" scrubbing surface.
- Ergonomic rubbergrip handle with hanger hole.

Case Pack	Weight	Case Dimensions
6	2.36	12.75 x 11.75 x 3.88

**#00520**  
**Long Handle Palmyra Scrub Brush**



- 52 tufts of 2" long, staple-set stiff palmyra fibers.
- 19" long, grooved polymer handle with hanger hook.
- 2.75" wide scraper.
- 5" x 6" scrubbing surface.
- Excellent for deep cleaning rough surfaces.

Case Pack	Weight	Case Dimensions
6	4.30	20.88 x 13.38 x 4.38

**#00521**  
**Long Handle Tampico Scrub Brush**



- 62 tufts of 2" long, staple-set natural tampico fibers.
- 19" long, grooved polymer handle with hanger hook.
- 2.75" wide scraper.
- 5" x 6" scrubbing surface.
- Acid resistant fiber.

Case Pack	Weight	Case Dimensions
6	4.68	20.88 x 13.38 x 4.38



**#00522 Long Handle Utility Brush - Red**  
**#00010 Long Handle Utility Brush - White**



#522



#10

- 52 tufts of 2" long, recycled PET, staple-set fibers.
- 17.5" long, grooved polymer handle with hanger hook.
- 2.75" wide scraper.
- 4" x 5" scrubbing surface.
- Excellent for multi-surface applications.

Case Pack	Weight	Case Dimensions
6	4.00	19.63 x 11.38 x 3.88



**It's not just a company.  
It's our family name.**



**A key to Libman's success is our near perfect 100% fill rate performance.**



**#00022**  
**Round Bowl Brush**



- 103 tufts of extra durable, 1" long, recycled PET, staple-set fibers.
- 14" total length with full "U" shape fiber placement to reach deep under rim.
- Ergonomic rubbergrip handle with hanger hole.
- Brush also sold as part of set #00040 and #00034, with caddy.

Case Pack	Weight	Case Dimensions
6	2.14	14.88 x 11.13 x 3.75



**#00024**  
**Traditional Bowl Brush**



- 2" long, extra durable recycled PET fibers twisted in rust-resistant wire.
- 11" long handle, 16.25" total length.
- Ergonomic rubbergrip handle with hanger hole.

Case Pack	Weight	Case Dimensions
12	3.42	18.88 x 15.00 x 6.00



### #01020 Angled Toilet Bowl & Urinal Brush



- 100 tufts of 1" long, recycled PET, staple-set fibers.
- 16" total length with contoured grip handle.
- Full "U" shape fiber placement, 3.25" wide head.
- Angled handle to easily reach under rim.
- Ergonomic rubbergrip handle with hanger hole.
- Brush also sold as part of set #01022, with caddy.

Case Pack	Weight	Case Dimensions
6	2.78	16.75 x 12.13 x 4.13



### #00034 Round Bowl Brush & Open Caddy



- 103 tufts of 1" long, recycled PET, staple-set fibers.
- 15" total height.
- 5.5" x 5.5" caddy.
- Extra sturdy polypropylene molded base will not tip over.
- Contains #00022 Round Bowl Brush.
- Compact size to fit into tight spaces.

Case Pack	Weight	Case Dimensions
4	2.52	16.00 x 11.00 x 6.00



### #00040 Round Bowl Brush & Closed Caddy



- 103 tufts of 1" long, recycled PET, staple-set fibers.
- 15" total height.
- 4.5" x 5.5" caddy.
- Extra sturdy polypropylene molded base will not tip over.
- Air slits for faster drying.
- Contains #00022 Round Bowl Brush.
- For food service and hospitality applications.

Case Pack	Weight	Case Dimensions
4	3.10	15.38 x 11.75 x 5.88



### #01022 Premium Angled Toilet Bowl Brush & Caddy



- 100 tufts of 1" long, recycled PET, staple-set fibers.
- 17" total height.
- 4.75" x 7" caddy.
- Extra sturdy polypropylene molded base will not tip over.
- Air slits for faster drying.
- Contains #01020 Angled Toilet Bowl Brush.
- For food service and hospitality applications.

Case Pack	Weight	Case Dimensions
4	4.18	17.75 x 11.88 x 7.25



### #00598 Premium Toilet Plunger & Caddy



- Extra durable thermoplastic rubber base.
- Extra long flange creates maximum suction performance.
- 24" total height.
- Caddy designed to hide plunger to allow storage next to toilet.
- Oversized grip for easy handling.
- Contains #00597 Premium Toilet Plunger.
- Perfect for hospitality applications.

Case Pack	Weight	Case Dimensions
4	5.56	24.00 x 13.75 x 7.88



### #00597 Premium Toilet Plunger



- Extra durable thermoplastic rubber base.
- Extra long flange creates maximum suction performance.
- 23" total height.
- Oversized grip for easy handling.
- Plunger also sold as part of set #00598.

Case Pack	Weight	Case Dimensions
4	3.40	23.80 x 11.40 x 6.80



Libman's mops, floor cleaners, and sponges eliminate dust, dirt, and the allergens in them

# mops, buckets & floor cleaners



# A key to Libman's success is our tremendous quality control and reputation amongst commercial end-users.



## #04002 Freedom® Spray Mop

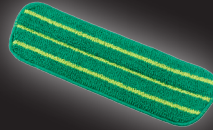


- 15" x 5" premium, thick absorbent pad provides a deep clean.
- Machine washable pad up to 100 times.
- Total mop height is 49".
- Mop head angled to reach tough corners.
- Removable and refillable fluid reservoir can be filled with any solution.
- Mop head swivels 360°.
- Refill #04003 (12-pack, 2.2 lbs).
- Excellent for quick cleaning on all hard surfaces.

Case Pack	Weight	Case Dimensions
4	12.68	56.13 x 12.63 x 3.88



## #04003 Freedom® Spray Mop Pad



- 15" x 5" premium, thick absorbent pad provides a deep clean.
- Machine washable pad up to 100 times.
- Mop head angled to reach tough corners.
- Excellent for quick cleaning on all hard surfaces.

Case Pack	Weight	Case Dimensions
12	2.22	11.13 x 5.25 x 6.00



## #00990 Big Wonder® Mop



- 16" long durable, cut-end strips.
- 3/4" steel handle with 64" total height.
- Non-woven strips. Premium synthetic material. Absorbent and machine washable.
- Easy release mop head.
- Light weight mop, less than 3 pounds when wet.
- Refill #00991 (6-pack, 2.94 lbs).
- Excellent for janitorial, BSC, hospitality, office products, healthcare, and housekeeping applications.

Case Pack	Weight	Case Dimensions
4	6.64	67.00 x 8.50 x 3.88



## #00988 Big Tornado® Mop



- 100% synthetic yarn resists bacterial odor. 3 red bands prevent tangling.
- 3/4" steel handle with 54.5" total height.
- Quick release clip for easy mop head change.
- Light weight mop, less than 3.5 pounds when wet.
- Refill #00989 (6-pack, 4.8 lbs).
- Large, #16 mop head covers 50% more surface area.
- Excellent for janitorial, hospitality, office products, and housekeeping applications.

Case Pack	Weight	Case Dimensions
4	6.96	56.13 x 7.25 x 4.38



## #02000 Wonder® Mop



- 10" long durable, cut-end strips.
- 3/4" steel handle with 58" total height.
- Non-woven strips. Microfiber GRIPSTRIPS™ lift more dirt. Machine washable up to 50 times.
- Easy release mop head.
- Light weight mop, less than 2.5 pounds when wet.
- Refill #02001 (6-pack, 1.5 lbs.).
- Excellent for hospitality, office products, healthcare, and housekeeping applications.

Case Pack	Weight	Case Dimensions
4	5.00	59.63 x 8.13 x 3.50



## #02030 Tornado® Mop



- 100% synthetic yarn resists bacterial odor. 3 green bands prevent tangling.
- 3/4" steel handle with 54.5" total height.
- Quick release clip for easy mop head change.
- Light weight mop, less than 3.5 pounds when wet.
- Refill #02031 (4-pack, 2.6 lbs.).
- #12 mop head.
- Excellent for hospitality, office products, and housekeeping applications.

Case Pack	Weight	Case Dimensions
4	6.92	56.38 x 6.75 x 4.25



**#00121**  
**12 oz. Cotton Wet Mop**



- 12 oz., 4-ply, recycled cotton blend yarn with scrub pads.
- 3/4" steel handle with handle grip and hanger hole.
- Looped-ends with tail band provides more durability and will not tangle.
- Strong polymer yarn connector with threaded, replaceable handle (Libman #603).
- Refill #00130 (6-pack, 4.5 lbs).
- Deck mop wringer bucket available on page 23.

Case Pack	Weight	Case Dimensions
6	8.66	47.38 x 6.50 x 5.25



**#00088**  
**8 oz. Cotton Deck Mop**



- 8 oz., 4-ply, recycled cotton blend yarn.
- 3/4" steel handle with handle grip and hanger hole.
- Strong polymer yarn connector with threaded, replaceable handle (Libman #603).
- Cut-ends offer more economical general cleaning option.
- Refill #00090 (6-pack, 3.3 lbs).
- Deck mop wringer bucket available on page 23.

Case Pack	Weight	Case Dimensions
6	6.98	47.88 x 6.50 x 4.38



**#00091**  
**12 oz. Cotton Deck Mop**



- 12 oz., 4-ply, recycled cotton blend yarn.
- 3/4" steel handle with handle grip and hanger hole.
- Strong polymer yarn connector with threaded, replaceable handle (Libman #603).
- Cut-ends offer more economical general cleaning option.
- Deck mop wringer bucket available on page 23.

Case Pack	Weight	Case Dimensions
6	8.74	47.13 x 6.75 x 4.25



**#00977**  
**16 oz. Cotton Deck Mop**



- 16 oz., 4-ply, recycled cotton blend yarn.
- 3/4" steel handle with handle grip and hanger hole.
- Strong polymer yarn connector with threaded, replaceable handle (Libman #603).
- Cut-ends offer more economical general cleaning option.
- Refill #00944 (6-pack, 6 lbs).
- Deck mop wringer bucket available on page 23.

Case Pack	Weight	Case Dimensions
6	10.20	50.00 x 8.50 x 4.88



**It's not just a company.  
It's our family name.**



# Libman's line of wet mop heads and handles is focused on the top selling items and superior quality.



## #00981 Steel Mop Handle



- 1" thick steel handle and 5" grip with hanger hole.
- 60" long handle with total length 65".
- Galvanized steel wing nut mop frame.
- Traditional style handle easily attaches to any Libman mop head.

Case Pack	Weight	Case Dimensions
6	11.84	65.75 x 9.25 x 4.63



## #00982 Quick-Change Mop Handle



- 1" thick steel handle and 5" grip with hanger hole.
- 60" long handle with total length 63".
- Unique quick-change handle with a quick-release lever.
- More sanitary as hands don't have to touch dirty mop head to change.
- Durable resin construction threaded onto the handle.
- Hinged head that opens completely to easily remove and add mop heads.
- Traditional style handle easily attaches to any Libman mop head.

Case Pack	Weight	Case Dimensions
6	7.68	65.75 x 9.25 x 4.63



## #00983 Resin Jaw Mop Handle



- 1" thick steel handle and 5" grip with hanger hole.
- 60" long handle with total length 63".
- Resin jaw mop frame spins to tighten and loosen.
- Easily clamps onto any Libman mop head.

Case Pack	Weight	Case Dimensions
6	7.12	65.75 x 9.25 x 4.63



## #00968 Large Blue Blend Wet Mop



- 4-ply, blend of cotton (25%), rayon (25%), polyester (25%) and acrylic (25%) blended to absorb up to 7 times its weight.
- 1.25" cloth head band.
- Looped-end with 1/2" tail band, to provide more durability and will not tangle.
- 20 oz in weight.
- Excellent for heavy-duty, tough mopping jobs.

Case Pack	Weight	Case Dimensions
6	8.84	15.63 x 12.38 x 9.63



## #00969 Large Finishing Wet Mop



- Rayon, polyester, acrylic blend specially formulated to apply all floor finishes.
- 1.25" cloth head band.
- Looped-end with 1/2" tail band, to provide more durability and will not tangle.
- Specially formulated for finishing applications.
- 20 oz in weight.

Case Pack	Weight	Case Dimensions
6	8.76	15.63 x 11.25 x 8.25



## #00972 Large Looped-End Wet Mop



- 4-ply, recycled cotton blended yarn.
- 1.25" cloth head band.
- Looped-end with 1/2" tail band, to provide more durability and will not tangle.
- 20 oz in weight.
- Excellent for all-purpose mopping applications.

Case Pack	Weight	Case Dimensions
6	8.70	17.50 x 13.25 x 7.75



**#00973**  
**Extra Large Looped-End Wet Mop**



- 4-ply, recycled cotton blended yarn.
- Extra wide 5" cloth head band for scrubbing.
- Looped-end with 1/2" tail band, to provide more durability and will not tangle.
- 24 oz in weight.
- Excellent for general cleaning, with frequent washings.

Case Pack	Weight	Case Dimensions
6	14.28	20.13 x 17.88 x 7.50



**#00974**  
**#16 Cut-End Cotton Wet Mop**



- 4-ply, recycled cotton blended yarn.
- Cut-end with 1.25" cloth head band.
- 14 oz in weight.
- Economical cleaning option, excellent for general use.

Case Pack	Weight	Case Dimensions
6	7.20	15.88 x 12.75 x 6.25



**#00975**  
**#24 Cut-End Cotton Wet Mop**



- 4-ply, recycled cotton blended yarn.
- Cut-end with 1.25" cloth head band.
- 20 oz in weight.
- Economical cleaning option, excellent for general use.

Case Pack	Weight	Case Dimensions
6	8.64	17.83 x 13.38 x 7.13



**#00976**  
**#32 Cut-End Cotton Wet Mop**



- 4-ply, recycled cotton blended yarn.
- Cut-end with 1.25" cloth head band.
- 28 oz in weight.
- Economical cleaning option, excellent for general use.

Case Pack	Weight	Case Dimensions
6	15.12	20.00 x 17.88 x 7.63



**#02121**  
**Medium Microfiber Wet Mop**



- Premium microfiber lifts and locks dirt.
- Looped-end with 1/2" tail band, to provide more durability and will not tangle.
- 10 oz in weight.
- Machine washable and reusable.
- Excellent for general cleaning, with frequent washings.
- The ultimate cleaning performance mop head.

Case Pack	Weight	Case Dimensions
10	7.84	16.75 x 13.00 x 8.38



**#02122**  
**Large A-B Looped-End Wet Mop**



- 4-ply, recycled anti-bacterial cotton blended yarn.
- Looped-end with 1/2" tail band, to provide more durability and will not tangle.
- 20 oz in weight.
- Resists odor causing bacteria.
- Picks up 5-7 times its weight in water and wrings out easily.
- Machine washable and reusable.
- Excellent for general cleaning, in high frequency applications.

Case Pack	Weight	Case Dimensions
10	14.26	21.63 x 13.38 x 9.75

# Libman's buckets are manufactured in our Arcola, Illinois USA plant under strong quality control.



**#00933**

## 26 Qt. Mop Bucket & Wringer



- 26 quart bucket has a 11.75" x 10.25" opening and is 24" tall, when wringer is inserted. 11.75" x 17.25" opening without wringer.
- Patented side press wringer with unique wringer panel design that expels more water with less spilling and splashing.
- Heavy duty steel bucket handle with soft rubber grip for easier lifting and pouring.
- Handle lays on either side, out of the way during mopping.
- Available wringer only as #00599.

Case Pack	Weight	Case Dimensions
1	17.89	20.00 x 16.38 x 20.13



**#01056**

## 4 Gallon Bucket With Wringer



- 16" x 13.25" total opening, with 7.75" x 12.75" individual compartments.
- 1 compartment for clean water, the other for dirty.
- Ergonomic polymer molded handle.
- Constructed of durable polymer with pouring spout on each side.
- Excellent for wet and deck mops that do not have wringer.
- Available in green and white option as #02112.

Case Pack	Weight	Case Dimensions
3	9.20	18.75 x 15.38 x 15.13



**#01055**

## 4 Gallon Bucket



- 16" x 13.25" total opening, with 7.75" x 12.75" individual compartments.
- 1 compartment for clean water, the other for dirty.
- Ergonomic polymer molded handle.
- Constructed of durable polymer with pouring spout on each side.
- Excellent for all types of mops.
- Available in green and white option as #02113.

Case Pack	Weight	Case Dimensions
3	7.86	18.75 x 15.50 x 15.13



**#00255**

## Oval Utility Bucket



- 3.5 gallon/13 quart bucket is 16" long and 10" wide.
- Ergonomic polymer molded handle.
- Constructed of durable polymer with pouring spouts on both ends.
- Excellent economical and general use option.

Case Pack	Weight	Case Dimensions
6	11.00	16.88 x 11.38 x 25.13



**#02111**

## 3 Gallon Clean & Rinse Bucket



- 13.25" x 13.25" total opening, with 6.5" x 12" individual compartments.
- 1 compartment for clean water, the other for dirty.
- Ergonomic polymer molded handle.
- Constructed of durable polymer with pouring spouts on both ends.
- Excellent for all types of mops.

Case Pack	Weight	Case Dimensions
3	6.45	14.38 x 14.00 x 14.88



**#00256**

## 3 Gallon Round Utility Bucket



- 3 gallon/12 quart bucket is 15" long and 10" wide.
- Ergonomic polymer molded handle.
- Features pouring spouts on both sides with notches on the bottom for fingers to help with pouring.
- Excellent economical and general use option.
- Available in black option as #00517.

Case Pack	Weight	Case Dimensions
6	5.86	16.00 x 11.63 x 13.88

# Libman's heavy and light duty sponge mops have super absorbent, tear resistant sponges that leave floors sparkling clean.



## #00955 Roller Mop with Scrub Brush



- 12" wide, tear resistant, synthetic sponge with raised cleaning circles.
- 1" thick, one-piece steel handle with 51.5" total height.
- 8.5" scrub brush with 0.75" long stiff bristles.
- Easy pull back, ergonomic handle grip to wring.
- Unique angled head design to maximize sponge to floor surface area coverage and to reduce user fatigue.
- Refill #00956 (6-pack, 1.39 lbs).

Case Pack	Weight	Case Dimensions
4	10.62	58.13 x 12.75 x 7.63



## #00958 Gator® Mop with Brush



- 11" wide, tear resistant, synthetic sponge head removes more water.
- 1" thick, one-piece steel handle with 53.75" total height.
- 8.5" scrub brush with 0.75" long stiff bristles.
- Refill #00959 (6-pack, 1.38 lbs).
- Butterfly style mop wrings more water and leaves floors drier, faster.

Case Pack	Weight	Case Dimensions
4	9.86	56.75 x 11.38 x 8.38



## #02010 Nitty Gritty® Roller Mop



- 10" wide, tear resistant, synthetic sponge with raised cleaning circles.
- 3/4" thick, one-piece steel handle with 51.5" total height.
- 8.5" scrub brush with 0.75" long stiff bristles.
- Easy pull back, ergonomic handle grip to wring.
- Unique angled head design to maximize sponge to floor surface area coverage and to reduce user fatigue.
- Refill #02011 (6-pack, 1.92 lbs).

Case Pack	Weight	Case Dimensions
4	9.58	56.88 x 11.00 x 8.88



## #02016 & #02026 Sponge Roller Mops



#02016



#02026

- #02016, 9" wide, tear resistant, angled sponge head removes more water.
- 3/4" thick, one-piece steel handle with 51" total height.
- Easy pull back handle grip to wring.
- Refill #02017 (6-pack, 1.6 lbs).

Case Pack	Weight	Case Dimensions
4	8.22	52.50 x 11.00 x 9.13

- #02026, extra dry 10" oceanic sponge ideal for the damp mopping wood floors require.
- Floors dry 3x faster than with standard sponge.
- 3/4" thick, one-piece steel handle with 51" total height.
- Easy pull back, ergonomic handle grip to wring.
- Refill #02027 (6-pack, 1.37 lbs).

Case Pack	Weight	Case Dimensions
4	8.58	52.38 x 11.13 x 9.13



## #03103 Scrubster™ Mop



- 9" wide sponge with cellulose surface.
- 3/4" thick, one-piece steel handle with 49.75" total height.
- 5" scrub brush with 0.75" long stiff bristles.
- Polymer, ergonomic wringer squeezes 100% of sponge.
- Easy squeeze and snap refill change.
- Refill #03105 (6-pack, 1.1 lbs).

Case Pack	Weight	Case Dimensions
4	7.20	50.75 x 10.00 x 9.25



## #03020 Gator® Mop #03024 Microfiber Gator® Mop



#03020



#03024

- #03020, 9" wide, tear resistant, cellulose sponge.
- 3/4" thick, one-piece steel handle with 54.5" total height.
- 8.5" scrub brush with 0.75" long stiff bristles.
- Easy pull back, ergonomic handle grip to wring.
- Easy squeeze and snap refill change.
- Refill #03021 (6-pack, 3.47 lbs).

Case Pack	Weight	Case Dimensions
6	8.32	58.75 x 9.75 x 10.25

- #03024, 9" wide, microfiber coated sponge.
- 3/4" thick, one-piece steel handle with 54.5" total height.
- Easy pull back, ergonomic handle grip to wring.
- Easy squeeze and snap refill change.
- Refill #03025 (6-pack, 3.47 lbs).

Case Pack	Weight	Case Dimensions
6	8.40	56.50 x 9.50 x 7.25

# Libman's cotton and microfiber mops have strong electrostatic properties to pick up all debris.



## #00922 24" Dust Mop



- Standard 24" x 5" dust mop head. 100% cotton.
- 1.75" cut-end fringe. Zipper opening.
- 1" thick steel handle and 5" grip with 65" total height.
- Machine washable in mesh net bag.
- 360° swivel to reach tough spots.
- Refill (Head only) #00923 (6-pack, 10.11 lbs).
- Excellent for industrial, healthcare, education, and warehouse applications.

Case Pack	Weight	Case Dimensions
6	24.38	66.13 x 12.00 x 7.75



## #00924 36" Dust Mop



- Standard 36" x 5" dust mop head. 100% cotton.
- 1.75" cut-end fringe. Zipper opening.
- 1" thick steel handle and 5" grip with 65" total height.
- Machine washable in mesh net bag.
- 360° swivel to reach tough spots.
- Refill (Head only) #00925 (6-pack, 6.8 lbs).
- Excellent for industrial, healthcare, education, and warehouse applications.

Case Pack	Weight	Case Dimensions
6	21.5	65.50 x 8.87 x 4.50



## #00985 Dust Mop Handle



- Chrome plated, steel clip on swivel mop attachment.
- 1" thick steel handle and 5" handle grip with hanger hole.
- Total length 63".
- Handle used for #00922 and #00924 dust mops.

Case Pack	Weight	Case Dimensions
6	9.03	65.50 x 8.88 x 4.38



## #00926 Microfiber Fingers Dust Mop



- Extra large 18" x 9" dust mop head. Premium microfiber.
- Elastic band head fits around base.
- 1" thick steel handle and 5" grip with 50.75" total height.
- Machine washable and reusable.
- 360° swivel to reach tough spots.
- Base snaps flat to hang.
- Refill (Head only) #00927 (6-pack, 3.6 lbs).
- Excellent for hardwood and other hard flooring surfaces.

Case Pack	Weight	Case Dimensions
4	9.10	58.75 x 10.50 x 5.00



## #00117 18" Microfiber Wet/Dry Floor Mop



- 6.5" x 18.5" microfiber cleaning pad. 5" x 18" full rectangular flat base/frame.
- 3/4" steel handle with handle grip and hanger hole with 50" total height.
- 360° swivel to reach tough spots.
- Use wet with cleaner or dry for dusting.
- Machine washable and reusable.
- Refill (Head only) #00119 (6-pack, 1.48 lbs).
- Excellent for hardwood and other hard flooring surfaces.

Case Pack	Weight	Case Dimensions
6	9.06	58.88 x 9.88 x 6.50



## #00195 Microfiber Dust Mop



- 6.5" x 18.5" microfiber fingers dusting pad. 5" x 18" full rectangular flat base/frame.
- 3/4" steel handle with handle grip and hanger hole with 51" total height.
- 360° swivel to reach tough spots.
- Premium pad picks up dust and the allergens in it.
- Machine washable and reusable.
- Refill (Head only) #00196 (6-pack, 2.31 lbs).
- Excellent for hardwood and other hard flooring surfaces.

Case Pack	Weight	Case Dimensions
6	10.14	59.13 x 9.75 x 6.50



### #01010 Microfiber Cleaning System

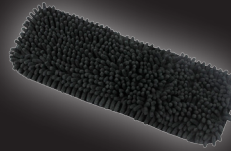


- 15" x 5" molded hook and loop mop head.
- 1" thick steel handle with 51" total height.
- 360° swivel to reach tough spots.
- Gray, all-purpose cleaning pad can be used wet or dry.
- Two additional pads sold separately, #01011 and #01012.
- Machine washable and reusable.
- Microfiber All-Purpose Cleaning Pad #01013 included in kit.
- Excellent for quick clean-ups and as a tool for stripping projects.

Case Pack	Weight	Case Dimensions
6	9.23	63.88 x 9.88 x 6.13



### #01011 Microfiber Fingers Dusting Pad



- 15" x 5" premium microfiber fingers pad.
- Black microfiber fingers dusting pad has 5 times more surface area than disposable pads.
- Used with #01010 Microfiber Cleaning System.
- Machine washable and reusable.
- Excellent for hardwood and other hard surfaces.

Case Pack	Weight	Case Dimensions
6	1.85	11.25 x 6.50 x 5.50



### #01012 Microfiber Stripping & Finishing Pad

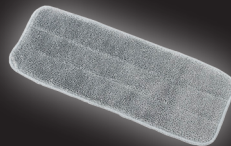


- 15" x 5" premium microfiber pad.
- White microfiber stripping and finishing pad easily and evenly applies stripping and sealing chemicals for big, annual projects.
- Used with #01010 Microfiber Cleaning System.
- Machine washable and reusable.
- Excellent for quick clean-ups and as a tool for big stripping projects.

Case Pack	Weight	Case Dimensions
12	2.31	11.00 x 6.50 x 6.50



### #01013 Microfiber All-Purpose Cleaning Pad



- 15" x 5" premium microfiber pad.
- Gray, all-purpose cleaning pad can be used wet or dry.
- Used with #01010 Microfiber Cleaning System.
- Machine washable and reusable.
- Excellent for regular cleaning and dusting.

Case Pack	Weight	Case Dimensions
12	2.31	11.00 x 6.50 x 6.50



### #02048 Hardwood Floor Cleaning System



- A total solution kit for hardwood floor cleaning and protection.
- 7/8" thick steel handle with 56" total height.
- Includes 4-piece handle, easy change microfiber cleaning pad, and liquid floor cleaner.
- 11" x 5.25" rectangular cleaning pad.
- Super absorbent, premium microfiber pad lifts and locks dirt, leaving a streak-free shine.
- Machine washable up to 50 times.
- Cleaning solution has a fresh citrus scent.
- Cleans, shines, and protects without a waxy build-up.
- Cleaner refill is #02047 (6-pack, 10.5 lbs).
- Pad refill is #02050 (12-pack, 0.87 lbs).

Case Pack	Weight	Case Dimensions
4	14.50	6.50 x 11.50 x 17.00



### #04005 Freedom® Floor Duster



- 11.5" x 5.5" rectangular, flat-base frame and microfiber cleaning pad.
- 3/4" thick steel handle with 52.5" total height.
- Premium microfiber fingers dusting pad has 5 times more surface area than disposable pads.
- Specially designed comb to remove the dust, dirt, and pet hair that is picked up.
- Excellent for hardwood and other hard surfaces.
- Easy-change pad.
- Machine washable and reusable.
- Refill is #04006 (6-pack, 1.11 lbs).

Case Pack	Weight	Case Dimensions
4	6.74	57.25 x 11.63 x 5.00

# Libman's floor cleaners have been shown by independent testing labs to maximize cleaning performance.



## #02047 24oz Hardwood Floor Cleaner (RTU)



- 24 oz pull cap bottle.
- Fresh citrus scent.
- Cleans, shines, and protects without a waxy build up.
- Hides minor scratches.
- Reveals beauty of the grain and nourishes the wood.
- Use for regular cleanings.

Case Pack	Weight	Case Dimensions
6	10.50	9.13 x 8.00 x 7.63



## #02052 1 Gallon Hardwood Floor Cleaner (RTU)



- 1 gallon refill.
- Fresh citrus scent.
- Cleans, shines, and protects without a waxy build up.
- Hides minor scratches.
- Reveals beauty of the grain and nourishes the wood.
- Use for regular cleanings.

Case Pack	Weight	Case Dimensions
4	35.34	15.38 x 9.00 x 12.00



## #02054 16oz Hardwood Spot Cleaner (RTU)



- 16 oz trigger sprayer bottle.
- Fresh citrus scent.
- Cleans, shines, and protects without a waxy build up.
- Hides minor scratches.
- Reveals beauty of the grain and nourishes the wood.
- Use for everyday, spot cleanings.

Case Pack	Weight	Case Dimensions
6	7.64	7.75 x 6.50 x 10.88



## #02055 24oz Hardwood Polish (RTU)



- 24 oz pull cap bottle.
- Fresh citrus scent.
- Protects, renews, and restores hardwood floors, without yellowing, to their natural shine.
- Restores gloss to finished hardwood and laminate floors that have been distressed from heavy traffic or scratches.
- Use monthly to prevent scratching, dulling, and to maintain a high quality shine.

Case Pack	Weight	Case Dimensions
6	10.50	9.13 x 8.00 x 7.63



## #04007 16oz Freedom® Hardwood Cleaner (Concentrated)



- 16 oz specially designed bottle, with 1 oz pre-dosing compartment to fill the Freedom® Spray Mop tank with the exact amount of cleaner needed.
- Concentrated hardwood floor cleaner.
- Fresh citrus scent.
- Cleans, shines, and protects without a waxy build up.
- Hides minor scratches.
- Reveals beauty of the grain and nourishes the wood.
- Fills Freedom® Spray Mop tank 16 times.
- Use for regular cleanings.

Case Pack	Weight	Case Dimensions
4	5.28	7.88 x 5.50 x 9.25



## #04008 16oz Freedom® Multi-Surface Cleaner (Concentrated)



- 16 oz specially designed bottle, with 1 oz pre-dosing compartment to fill the Freedom® Spray Mop tank with the exact amount of cleaner needed.
- Concentrated multi-surface floor cleaner.
- Fresh citrus scent.
- Cleans away dirt and grime.
- Use on tile, vinyl, wood, linoleum, laminate, marble, stone, and more.
- Fills Freedom® Spray Mop tank 16 times.
- Use for regular cleanings.

Case Pack	Weight	Case Dimensions
4	5.28	7.88 x 5.50 x 9.25



Libman's microfiber dusters and cloths eliminate dust, dirt, and the allergens in them

# housekeeping tools



## Libman's dusting heads connect to any threaded handle providing the ability to clean all high-reach areas.



### #00585 24" Flexible Microfiber Duster



- 24" long x 3" wide duster head.
- Double-sided microfiber to lift and lock dirt; microfiber fingers provide maximum cleaning and are excellent for delicate surfaces.
- Fits all standard extension handles with threaded/taper connection.
- Machine washable and reusable head.
- Head bends and forms to meet all cleaning needs.
- Excellent for housekeeping, office, education, and hospitality applications.

Case Pack	Weight	Case Dimensions
6	4.08	30.13 x 3.88 x 6.25



### #00584 & #00116 Ceiling Fan Duster



#584



#116

- 12" wide, looped electrostatic head.
- 3.25" diameter recycled PET, soft fibers secured in twisted wire band.
- Fits all standard extension handles with threaded/taper connection.
- Easily cleans top and bottom of fan blades in one swipe.
- Excellent for residential or commercial use.
- Available with extension handle in green as #00116.

Case Pack	Weight	Case Dimensions
4	2.08	16.25 x 11.75 x 6.25



### #00586 Lambswool Duster



- 12.5" long lambswool with 19.5" total height.
- Fits all standard extension handles with threaded/taper connection.
- Made with real lambswool, to naturally attract and hold the smallest particles.
- Retains dust until spun free or washed out.
- Excellent for all housekeeping applications.

Case Pack	Weight	Case Dimensions
6	1.63	26.00 x 4.40 x 3.50



### #00587 Feather Duster



- 13.5" long feathers.
- Extra soft real ostrich feathers.
- Fits all standard extension handles with threaded/taper connection.
- Excellent for all housekeeping applications.

Case Pack	Weight	Case Dimensions
6	1.64	21.75 x 8.13 x 4.38



### #00094 18" Flexible Microfiber Duster



- 18" long x 3" wide duster head.
- Double-sided microfiber to lift and lock dirt; microfiber fingers provide maximum cleaning and are excellent for delicate surfaces.
- Handle extends to 5 feet, total length is 7 feet.
- Machine washable and reusable head.
- Head bends and forms to meet all cleaning needs.
- Excellent for all extended-reach dusting applications.

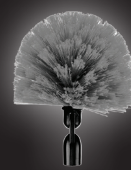
Case Pack	Weight	Case Dimensions
6	9.46	49.00 x 5.13 x 3.50



### #00118 & #02083 Swivel Duster



#118



#2083

- 8" wide dusting head, dome shaped.
- Handle extends to 6 feet, total length is 6.5 feet.
- 3/4" thick steel handle with hanger hole.
- Swivel head pivots 180 degrees.
- Excellent for cleaning recessed lighting and ceiling corners.
- Available as the head only, in gray fiber as #02083.

Case Pack	Weight	Case Dimensions
4	5.91	48.25 x 7.88 x 5.88

# Libman handheld dusters & dust removal tools are essential to any housekeeping tool kit.



## #00092 Microfiber Duster



- Oval 7.5" x 5" looped head.
- Premium microfiber fingers provide maximum cleaning surface area.
- Machine washable and reusable head.
- Ergonomic rubbergrip handle with hanger hole.
- Excellent for all housekeeping applications.

Case Pack	Weight	Case Dimensions
6	1.86	14.38 x 5.13 x 6.13



## #00155 Flexible Microfiber Wand



- 18" long x 3" wide head.
- Double-sided microfiber to lift and lock dirt; microfiber fingers provide maximum cleaning and are excellent for delicate surfaces.
- Machine washable and reusable head.
- Head bends and forms to meet all cleaning needs.
- Ergonomic rubbergrip handle with hanger hole.
- Excellent for dusting tight and hard to reach places.

Case Pack	Weight	Case Dimensions
6	3.20	24.13 x 5.88 x 3.63



## #00244 Lambswool Duster



- 10.5" long lambswool with 18" total height.
- Made with real lambswool to naturally attract and hold the smallest particles.
- Retains dust until spun free or washed out.
- Ergonomic rubbergrip handle with hanger hole.
- Excellent for all housekeeping applications.

Case Pack	Weight	Case Dimensions
12	2.22	25.75 x 4.63 x 3.75



## #00239 Feather Duster



- 7" long feathers with 13" total height.
- Extra soft real ostrich feathers.
- Ergonomic rubbergrip handle with hanger hole.
- Excellent for all housekeeping applications.

Case Pack	Weight	Case Dimensions
6	1.10	15.88 x 4.13 x 2.38



## #00093 Vent Brush



- 18" long x 1.25" wide brush head with 27" total height.
- Designed to get into narrow and hard to reach places.
- Flexible brush can accommodate a variety of shapes and angles.
- Ergonomic rubbergrip handle with hanger hole.
- Excellent for housekeeping, hospitality, government, and education applications.

Case Pack	Weight	Case Dimensions
6	1.84	27.25 x 4.00 x 2.63



## #00078 Lint Brush



- 3.5" long x 2.75" wide double-sided oval cleaning surface with 9" total height.
- Easily picks up lint, pet hair, and more.
- Ergonomic rubbergrip handle with hanger hole.
- Excellent for use on clothes, furniture, draperies, and more.

Case Pack	Weight	Case Dimensions
6	1.20	9.25 x 4.88 x 5.00

# Microfiber is safe for virtually every surface, while lifting and locking dirt.



## #00176 Microfiber Dusting Mitt



- 10.5" x 7" mitt.
- Double-sided microfiber to lift and lock dirt; microfiber fingers provide maximum cleaning and are excellent for delicate surfaces.
- Elastic, secure fit hand mitt eliminates cloths.
- Machine washable and reusable.
- Excellent for quick cleaning and keeps hands dust-free.

Case Pack	Weight	Case Dimensions
6	1.50	12.25 x 6.38 x 5.75



## #00580 Microfiber Cloths

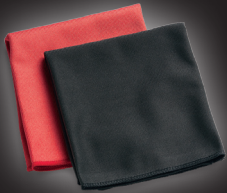


- 12" x 16" cloth.
- Microfiber blend of polyester and polyamide.
- Unit pack contains 3 cloths.
- Machine washable and reusable.
- Cleans with or without chemicals.
- Excellent for food service, janitorial, housekeeping applications and more.

Case Pack	Weight	Case Dimensions
6	3.70	13.00 x 8.50 x 10.25



## #00579 Microfiber Window/Mirror Cloths



- 12" x 16" cloth.
- Microfiber blend of polyester and polyamide.
- Unit pack contains 2 cloths.
- Machine washable and reusable.
- Cleans with or without chemicals.
- Excellent for food service, janitorial, housekeeping applications and more.

Case Pack	Weight	Case Dimensions
12	2.45	15.63 x 9.00 x 3.25



## #00592 Glass Wipes



- 13" x 17" lint-free towels.
- 100% cotton.
- Unit pack contains 6 wipes.
- Machine washable and reusable.
- Soft and absorbent, won't scratch.
- Excellent for food service, janitorial, housekeeping applications and more.

Case Pack	Weight	Case Dimensions
6	5.40	14.75 x 10.50 x 4.00



## #00590 Terry Wipes



- 13" x 17" pre-washed towels.
- 100% cotton.
- Unit pack contains 12 wipes.
- Machine washable and reusable.
- For cleaning, drying and polishing.
- Excellent for janitorial, construction, housekeeping applications and more.

Case Pack	Weight	Case Dimensions
6	14.57	23.50 x 14.50 x 7.50



## #00591 & #00593 Shop Wipes



- 13" x 17" pre-washed industrial utility towels.
- 100% cotton.
- Available in a 12 unit pack as #00591 and 24 unit pack as #00593.
- Machine washable and reusable.
- Excellent for industrial, janitorial, construction applications and more.

Case Pack	Weight	Case Dimensions
6	4.78	13.50 x 8.25 x 7.38

Case Pack	Weight	Case Dimensions
6	8.50	13.88 x 12.50 x 7.88



Libman's brushes, scrubbers and sponges  
eliminate dust, dirt, and grime

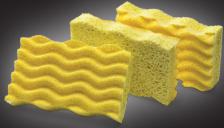
# kitchen tools



# Libman's line of sponges provide excellent debris removal, rinse clean, and are non-scratch.



## #01075 Light Duty Sponge

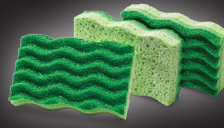


- 4.5" x 3" natural cellulose sponge, with a premium non-abrasive acrylic grain scrubbing surface.
- Deep grooves provide constant contact with scrubbing surface to remove all debris.
- Debris will not clog abrasive surface and sponge rinses clean.
- Will not scratch non-stick surfaces.
- 3-pack of sponges.
- Excellent for delicate surfaces and quick clean-ups, including glass, china, granite countertops, and Teflon cookware.

Case Pack	Weight	Case Dimensions
8	1.33	12.50 x 5.13 x 6.50



## #01076 Medium Duty Sponge

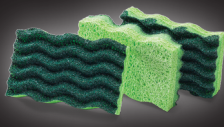


- 4.5" x 3" natural cellulose sponge, with a premium non-abrasive acrylic grain scrubbing surface.
- Deep grooves provide constant contact with scrubbing surface to remove all debris.
- Debris will not clog abrasive surface and sponge rinses clean.
- Will not scratch non-stick surfaces.
- 3-pack of sponges.
- Excellent for everyday, general use.

Case Pack	Weight	Case Dimensions
8	1.33	12.50 x 5.13 x 6.50



## #01077 Heavy Duty Sponge

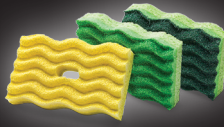


- 4.5" x 3" natural cellulose sponge, with a premium non-abrasive acrylic grain scrubbing surface.
- Deep grooves provide constant contact with scrubbing surface to remove all debris.
- Debris will not clog abrasive surface and sponge rinses clean.
- 3-pack of sponges.
- Excellent for tough jobs, including stuck-on foods and heavy duty pots and pans.

Case Pack	Weight	Case Dimensions
8	1.33	12.50 x 5.13 x 6.50



## #01078 Variety Sponge Pack

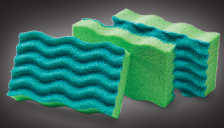


- 4.5" x 3" natural cellulose sponge, with a premium non-abrasive acrylic grain scrubbing surface.
- Deep grooves provide constant contact with scrubbing surface to remove all debris.
- Debris will not clog abrasive surface and sponge rinses clean.
- Unique hanger hole for easy drying and storage.
- One pack contains a sponge for every job: light duty, medium duty, and heavy duty.
- 3-pack of sponges.
- Excellent for everyday cleaning.

Case Pack	Weight	Case Dimensions
8	1.02	12.50 x 5.00 x 6.38



## #01079 Antibacterial Sponge

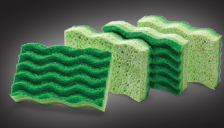


- 4.5" x 3" premium synthetic sponge, with a premium non-abrasive acrylic grain scrubbing surface.
- Deep grooves provide constant contact with scrubbing surface to remove all debris.
- Debris will not clog abrasive surface and sponge rinses clean.
- Antibacterial and antimicrobial to fight odor causing bacteria and mold build-up.
- 3-pack of sponges.
- Excellent for everyday, general use.

Case Pack	Weight	Case Dimensions
8	0.87	12.50 x 5.00 x 6.38



## #01081 All-Purpose Resealable Sponge Pack



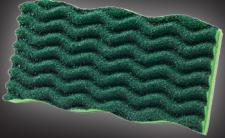
- 4.5" x 3" natural cellulose sponge, with a premium non-abrasive acrylic grain scrubbing surface.
- Deep grooves provide constant contact with scrubbing surface to remove all debris.
- Debris will not clog abrasive surface and sponge rinses clean.
- Zip lock bag allows for sponges that are not immediately needed to remain fresh and moist.
- Easy to use and store until additional sponges are needed.
- Will not scratch non-stick surfaces.
- 4-pack of All-Purpose sponges.
- Excellent for everyday, general use.

Case Pack	Weight	Case Dimensions
6	1.09	12.63 x 4.88 x 6.50

## Libman's sponges and scrubbers provide an option for every task.



### #01080 Heavy Duty Oversized Sponge



- 125% larger than the #1077 sponge.
- 7.5" x 3.5" natural cellulose sponge, with a premium non-abrasive acrylic grain scrubbing surface.
- Deep grooves provide constant contact with scrubbing surface to remove all debris.
- Debris will not clog abrasive surface and sponge rinses clean.
- Extra durable for tough jobs.
- Excellent for bathrooms, kitchens, and outdoor cleaning.

Case Pack	Weight	Case Dimensions
10	1.54	8.13 x 6.75 x 8.38



### #00064 Sponge Scrubber

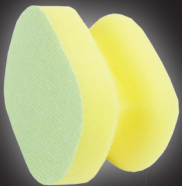


- 4" x 3" shaped synthetic sponge, with a scrubbing abrasive pad.
- Unit pack contains 2 pads.
- Grooved for easy gripping.
- Sponge stays soapy while scrubber removes tough debris.
- Excellent for tough jobs.

Case Pack	Weight	Case Dimensions
6	.57	7.75 x 5.88 x 6.13



### #02105 Easy Grip Power Scrubber

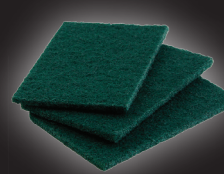


- 2.9" x 4" synthetic sponge with raised scrubbing surface.
- Shaped for comfortable gripping and scrubbing, while keeping nails and fingers out of the way.
- Easily rinses clean.
- Excellent for dishes and glasses, kitchens, and bathrooms.

Case Pack	Weight	Case Dimensions
6	0.50	6.00 x 7.75 x 7.88



### #00066 Scrub Pad

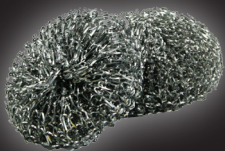


- 6" x 4" heavy duty scouring pads.
- Unit pack contains 3 pads.
- Long-lasting and flexible to reach tough spots.
- Excellent for spot cleaning.

Case Pack	Weight	Case Dimensions
12	1.46	14.13 x 6.38 x 5.00



### #00063 Stainless Steel Scrubber

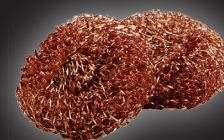


- 3" x 3" x 1" round, woven steel fibers.
- Unit pack contains 2 scrubbers.
- Stainless steel, rust free.
- Long-lasting and flexible to easily reach tough spots.
- Excellent for tough kitchen cleaning on pots, pans, grills, ovens and more.

Case Pack	Weight	Case Dimensions
12	1.33	11.88 x 8.25 x 5.63



### #00073 Copper Scrubber



- 3" x 3" x 1" round, 100% pure copper.
- Unit pack contains 2 scrubbers.
- Rust resistant copper.
- Long-lasting and flexible copper to easily reach tough spots.
- Excellent for use on stainless steel, anodized aluminum, copper and more.

Case Pack	Weight	Case Dimensions
12	1.38	12.13 x 8.25 x 5.25

# Libman brass and steel grill brush fibers are staple-set to the polymer block, resulting in better fiber retention.



## #00528 & #00529

### Long Handle BBQ Brush with Scraper



#528

#529

- 100 tufts of extra tough, 3/4" brass fibers.
- 13" long, grooved handle with hanger hook.
- 3" x 4" brush surface with 2.75" wide steel scraper.
- 18" total length.
- Quality design that does not lose any metal fibers.
- Dual-molded sanoprene handle grip.
- Excellent for stainless steel and cast iron surfaces.

Case Pack	Weight	Case Dimensions
6	3.80	18.75 x 11.75 x 3.00



## #00568

### Long Handle BBQ Brush - No Scraper



- 100 tufts of extra tough, 3/4" brass fibers.
- 13" long, grooved handle with hanger hook.
- 3" x 4" brush surface and polypropylene scraper edge.
- 18" total length.
- Quality design that does not lose any metal fibers.
- Dual-molded sanoprene handle grip.
- Excellent for stainless steel and cast iron surfaces.

Case Pack	Weight	Case Dimensions
6	3.65	18.75 x 11.88 x 3.00



## #00012

### Long Handle BBQ Brush



- 100 tufts of extra tough, 3/4" brass fibers.
- 13" long, grooved handle with hanger hook.
- 3" x 4" brush surface with 2.75" wide steel scraper.
- 18" total length.
- Quality design that does not lose any metal fibers.
- Dual-molded sanoprene handle grip.
- Excellent for stainless steel and cast iron surfaces.

Case Pack	Weight	Case Dimensions
6	3.95	18.75 x 11.75 x 3.25



## #00566

### Long Handle Stainless Steel Grill Brush



- 100 tufts of extra tough, 3/4" stainless steel fibers.
- 13" long, grooved handle with hanger hook.
- 3" x 4" brush surface and polypropylene scraper edge.
- 18" total length.
- Quality design that does not lose any metal fibers.
- Dual-molded sanoprene handle grip.
- Excellent for stainless steel and cast iron surfaces.

Case Pack	Weight	Case Dimensions
6	3.99	10.75 x 11.88 x 3.00



## #00575

### Short Handle Heat Resistant Grill Brush With Scraper



- 68 tufts of extra tough, 3/4" brass fibers.
- 8" long, grooved handle with hanger hole.
- 11" total length.
- 3" x 4" brush surface, with 2.75" wide steel scraper.
- Quality design that does not lose any metal fibers.
- Excellent for stainless steel and cast iron surfaces.

Case Pack	Weight	Case Dimensions
6	2.32	13.00 x 11.63 x 3.13



## #00595

### Short Handle Stainless Steel Grill Brush



- 68 tufts of extra tough, 3/4" stainless steel fibers.
- 8" long, grooved handle with hanger hole.
- 11" total length.
- 3" x 4" brush surface and polypropylene scraper edge.
- Quality design that does not lose any metal fibers.
- Excellent for stainless steel, porcelain, and cast iron surfaces.

Case Pack	Weight	Case Dimensions
6	2.39	12.25 x 12.00 x 3.25

# Libman dual molded kitchen brush handle grips provide ergonomic comfort and designs that provide the ability to clean easier and better.



## #00014 Hand and Nail Brush



- 110 tufts of flexible, polymer staple-set fibers.
- Ergonomic rubbergrip handle with thumb rest.
- 2" x 4" oval scrub surface.
- Perfect fit for hand cleaning.
- Ample extra knuckle room.

Case Pack	Weight	Case Dimensions
6	1.51	9.88 x 5.38 x 4.13



## #00042 Curved Kitchen Brush



- 53 tufts of extra durable, 3/4" recycled PET, staple-set fibers.
- Ergonomic rubbergrip handle with thumb rest.
- 2" wide rounded head to reach all areas.
- Excellent for cleaning coffee pots and other round pots.
- Excellent all-purpose kitchen brush.

Case Pack	Weight	Case Dimensions
6	1.35	9.88 x 9.38 x 2.75



## #00045 Kitchen Brush



- 48 tufts of extra durable, 7/8" recycled PET, staple-set fibers.
- 8" long, ergonomic rubbergrip handle.
- 2" x 2" scrub surface with scraper edge.
- Excellent for all dish cleaning and other kitchen applications.

Case Pack	Weight	Case Dimensions
12	2.18	14.88 x 10.75 x 2.13



## #01042 Dual-Scrub Kitchen Brush



- 73 tufts of extra durable, 7/8" recycled PET, staple-set fibers.
- 8" long, ergonomic rubbergrip handle.
- 2" x 3" scrub surface.
- Alternate 1.375" x .625" stiff scrubber on reverse side for extra tough jobs.
- Excellent for heavy duty dish cleaning and stuck-on messes.
- Also great for any other heavy duty scrubbing applications.

Case Pack	Weight	Case Dimensions
6	1.83	11.50 x 8.38 x 3.50



## #00035 Glass/Dish Sponge



- 2" x 4.5" cylindrical sponge with bottom scrubber.
- 7" long ergonomic rubbergrip handle.
- 12" total length.
- Excellent for glassware and other delicate jobs.

Case Pack	Weight	Case Dimensions
12	1.92	15.63 x 12.88 x 3.00



## #00039 Bottle Brush



- 2" polymer bristles twisted in zinc-coated, rust-resistant wire.
- 6" long ergonomic rubbergrip handle.
- 13" total length.
- Excellent for bottles and other dishes with hard to reach spots.

Case Pack	Weight	Case Dimensions
12	1.83	13.38x x6.50 x 5.88

## Libman soap dispensers have blow-molded polypropylene handles, made in Arcola, Illinois.



### #00048 Dish Scrub & Soap Dispenser



- Polyester 3.5" x 2" sponge with a non-abrasive, acrylic grain scrubbing surface and a built-in scraper edge.
- 7" long, contoured handle grip with 5 ergonomic finger rests.
- Twist cap opens to fill with soap.
- Deep grooves provide constant contact with scrubbing surface to remove all debris, and sponge rinses clean.
- Excellent for quick clean-ups and unique applications such as wallpaper removal.
- Refill #00049 (6-pack, 0.53 lbs).

Case Pack	Weight	Case Dimensions
6	1.17	13.00 x 10.50 x 2.75



### #00030 Dish Sponge & Soap Dispenser



- Natural cellulose surface 3.5" x 2" sponge with a built-in scraper edge.
- 7" long, contoured handle grip with 5 ergonomic finger rests.
- Twist cap opens to fill with soap.
- Excellent for quick clean-ups and unique applications such as wallpaper removal.
- Cellulose works well on delicate surfaces.
- Refill #00031 (6-pack, 0.68 lbs).

Case Pack	Weight	Case Dimensions
6	0.99	12.88 x 10.25 x 2.63



### #01045 Dish Sponge & Soap Dispenser



- 100% natural cellulose 3" wide sponge.
- 9" extra long, contoured handle grip with 5 ergonomic finger rests.
- Twist cap opens to fill with soap.
- Excellent for quick clean-ups and round containers.
- Cellulose works well on delicate surfaces.
- Refill #01046 (6-pack, 0.61 lbs).

Case Pack	Weight	Case Dimensions
6	1.22	12.00 x 8.38 x 4.88



### #01047 Dish Scrub & Soap Dispenser



- Polyester 3" wide sponge with a non-abrasive, acrylic grain scrubbing surface.
- 9" extra long, contoured handle grip with 5 ergonomic finger rests.
- Twist cap opens to fill with soap.
- Deep grooves provide constant contact with scrubbing surface to remove all debris, and sponge rinses clean.
- Excellent for quick clean-ups and round containers.
- Refill #01048 (6-pack, 0.52 lbs).

Case Pack	Weight	Case Dimensions
6	1.16	12.00 x 8.38 x 4.88



It's not just a company.  
It's our family name.





**Libman's line of squeegees has a strong focus on rubber flexibility and performance**

# squeegees & vehicle wash



# Libman provides complete, ready to use, floor squeegee sets to eliminate handle selection confusion.



## #00191 Flex Blade Floor Squeegee Set



- 18" wide black, closed-cell foam rubber blade.
- 52" long steel handle, connected with standard thread.
- Removes water from concrete, tile and brick.
- Contains #618 threaded handle.
- Rivet set to hold squeegee onto the handle neck.
- Excellent for construction & outdoor applications, specifically for uneven surfaces.

Case Pack	Weight	Case Dimensions
6	7.84	55.25 x 7.38 x 3.63



## #00192 18" Flex Blade Floor Squeegee

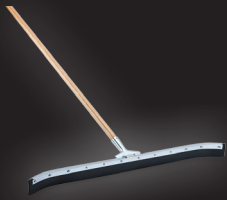


- 18" wide black, closed-cell foam rubber blade.
- Replacement squeegee for Libman #191.
- Fits most handles, specifically #618.
- Rivet set to hold squeegee onto the handle neck.
- Excellent for construction & outdoor applications, specifically for uneven surfaces.

Case Pack	Weight	Case Dimensions
12	6.87	18.00 x 10.13 x 7.50



## #00954 36" Curved Floor Squeegee Set



- 36" wide, curved, vulcanized, natural rubber squeegee blade.
- Contains Libman #600 wood handle - 1 1/8" tapered, lacquered.
- Bolted metal frame with tapered handle connector.
- 1/4" thick, 2" long, hard rubber blade fastened with lock nuts.
- Excellent for removing water or chemicals from outdoor or industrial applications.

Case Pack	Weight	Case Dimensions
6	31.68	71.75 x 14.63 x 6.25



## #00515 Soft Rubber Floor Squeegee Set

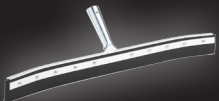


- 24" soft, synthetic rubber.
- Includes 59" long steel handle, connected with standard thread.
- Extra strong polymer support brace connects handle to squeegee.
- Hanger swivel tip handgrip.
- Excellent for semi-smooth surface applications, such as warehouses and garages.

Case Pack	Weight	Case Dimensions
6	9.22	6.50 x 4.63 x 59.50



## #00539 24" Curved Floor Squeegee



- 1/4" thick, 2" long, hard rubber blade fastened with lock nuts.
- Fits Libman #600 wood handle.

Case Pack	Weight	Case Dimensions
6	13.83	24.50 x 7.50 x 8.25



## #00542 24" Curved Floor Squeegee Set #01038 24" Straight Floor Squeegee Set



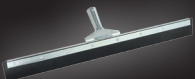
#542

- 24" wide, curved, vulcanized, natural rubber squeegee blade.
- Contains Libman #600 wood handle - 1 1/8" tapered, lacquered.
- Bolted metal frame with tapered handle connector.
- 1/4" thick, 2" long, hard rubber blade fastened with lock nuts.
- Excellent for removing water or chemicals from outdoor or industrial applications.

Case Pack	Weight	Case Dimensions
6	24.22	60.88 x 12.63 x 6.50



## #00538 24" Straight Floor Squeegee



- 1/4" thick, 2" long, hard rubber blade fastened with lock nuts.
- Fits Libman #600 wood handle.

Case Pack	Weight	Case Dimensions
6	10.51	24.38 x 7.38 x 7.75



#1038

- 24" wide, straight, vulcanized, natural rubber squeegee blade.
- Contains Libman #600 wood handle - 1 1/8" tapered, lacquered.
- Bolted metal frame with tapered handle connector.
- 1/4" thick, 2" long, hard rubber blade fastened with lock nuts.
- Excellent for removing water or chemicals from outdoor or industrial applications.

Case Pack	Weight	Case Dimensions
6	24.22	60.88 x 12.63 x 6.50

# Libman is an active member of the International Window Cleaning Association (IWCA).



## #01060 18" Clamp Squeegee



- 18" wide, vulcanized, natural rubber blade.
- Specially designed clamp to change blade easily and quickly.
- Friction fits standard handle and extension handles, specifically #611, #612, and #613.
- No slip rubber grip.
- 18" refill available as #1062 (12-pack, 5.63 lbs).
- 12" refill available as #1018 (12-pack, 4.73 lbs).
- Excellent for professional window cleaning.

Case Pack	Weight	Case Dimensions
12	5.84	6.88 x 8.50 x 19.88



## #01061 18" Swivel Squeegee



- 18" wide, vulcanized, natural rubber blade.
- Strong polypropylene swivel neck easily rounds tight corners.
- Friction fits standard handle and extension handles, specifically #611, #612, and #613.
- Easy-change, clamp refill.
- 18" refill available as #1062 (12-pack, 5.63 lbs).
- 12" refill available as #1018 (12-pack, 4.73 lbs).
- Excellent for professional window cleaning, specifically jobs with tight corners.

Case Pack	Weight	Case Dimensions
12	5.84	6.88 x 8.50 x 19.88



## #00193 Microfiber Window Washer



- 11.25" wide microfiber head.
- Use with or without handle.
- Fits all tapered and threaded extension handles, specifically #618 handle.
- Removes tough dirt from windows. Use wet or dry.
- Microfiber is machine washable and reusable.
- Excellent for residential or commercial jobs.

Case Pack	Weight	Case Dimensions
6	3.54	11.13 x 11.13 x 8.00



## #00194 Microfiber & Squeegee Window Washer



- 11.25" wide dual microfiber and rubber squeegee head.
- Use with or without handle.
- Fits all tapered and threaded extension handles, specifically #618 handle.
- Microfiber side can be used to remove tough dirt or apply chemicals.
- Squeegee blade cleans streak-free.
- Excellent for residential or commercial jobs.

Case Pack	Weight	Case Dimensions
4	3.15	16.00 x 11.13 x 5.75



## #00189 12" Stainless Steel Squeegee



- 12" vulcanized, natural rubber blade.
- Wipes streak-free.
- Use with or without handle.
- Friction fits standard handle and extension handles, specifically #611, #612, and #613.
- Blade refill #187 (12-pack, 1.16 lbs).
- Excellent for residential or commercial jobs.

Case Pack	Weight	Case Dimensions
12	5.20	16.50 x 8.63 x 4.38



## #00190 18" Stainless Steel Squeegee



- 18" vulcanized, natural rubber blade.
- Wipes streak-free.
- Use with or without handle.
- Friction fits standard handle and extension handles, specifically #611, #612, and #613.
- Blade refill #183 (12-pack, 1.60 lbs).
- Excellent for residential or commercial jobs.

Case Pack	Weight	Case Dimensions
12	6.53	19.88 x 8.50 x 6.88

**Libman is dedicated to offering new solutions in window cleaning, which embodies our spirit of creativity and innovation.**



**#01066**  
**Squeegee Bucket**



- 18.25" x 10.75" rectangular bucket.
- Fits up to 18" squeegees.
- Holds up to 6 gallons of cleaning solution.
- Easy to read fill lines.
- Heavy duty polymer molded handle grip.
- Excellent for professional and residential cleaning.

Case Pack	Weight	Case Dimensions
5	13.38	19.69 x 12.20 x 22.24



**#01065**  
**Window Cleaning All-In-One Kit**



- Total solution window cleaning kit: bucket, stainless steel squeegee, concentrated cleaning solution, microfiber washer, and window cloth.
- 15" x 7", 3 gallon bucket, with lid to store supplies when not in use.
- 12" wide, vulcanized, natural rubber blade on the stainless steel squeegee. Refill is #189.
- 24 oz concentrated window cleaner leaves a streak-free shine. Refill is #1063.
- 11" wide, microfiber washer to remove tough dirt or apply chemical. Used wet or dry. Machine washable. Refill is #193.
- 14" x 14" premium microfiber glass cloth cleans lint free. Refill is #321.
- Excellent as a window cleaning starter-kit.

Case Pack	Weight	Case Dimensions
2	9.04	18.50 x 7.25 x 19.00



**#01063**  
**Concentrated Window Cleaner**



- 24oz concentrated window cleaner.
- Provides a thick, stable foam to eliminate squeegee chatter.
- One bottle of concentrated cleaner makes 1,536 oz of solution.
- Excellent for glass, chrome, stainless steel, plastic, formica, ceramic, and more.

Case Pack	Weight	Case Dimensions
6	10.63	9.38 x 7.63 x 8.00



**#01064**  
**Ready-to-Use Window Cleaner**



- 1 gallon diluted professional window cleaner.
- Provides a thick, stable foam to eliminate squeegee chatter.
- No mixing needed.
- Excellent for glass, chrome, stainless steel, plastic, formica, ceramic, and more.

Case Pack	Weight	Case Dimensions
4	32.50	15.50 x 8.50 x 11.75



**#01070**  
**Shower Squeegee**



- 10" wide household squeegee.
- Total length 9".
- High-quality rubber wiping blade.
- Ergonomic, no-slip handle and hanger hole.
- Excellent for windows, mirrors, and showers.

Case Pack	Weight	Case Dimensions
6	1.48	11.75 x 9.13 x 3.88



**#00182**  
**All-Purpose Squeegee**



- 6" wide household squeegee.
- Total length 6.5".
- High-quality rubber wiping blade.
- Lightweight and easy to use.
- Excellent for quick shower and all-purpose clean-ups.

Case Pack	Weight	Case Dimensions
12	2.17	7.25 x 6.50 x 8.38

# Libman provides handles to fit all window cleaning washing needs.



## #00600 60" Tapered Wood Handle



- 60" long, tapered end.
- 1.125" thick wood handle.
- Clear lacquer finish.
- Fits tapered end applications, including Libman Floor Squeegees #538, #539, #542, and #954.

Case Pack	Weight	Case Dimensions
12	21.50	60.25 x 5.13 x 3.50



## #00611 8 Foot Extension Handle



- Handle extends to 8 feet.
- Three-piece handle closes to approximately 3.5 feet.
- Light weight and durable aluminum with 5" hanger tip.
- Dual use threaded and tapered end.
- Fits Libman's broad assortment of squeegee products.

Case Pack	Weight	Case Dimensions
6	8.00	43.38 x 5.75 x 3.38



## #00612 12 Foot Extension Handle

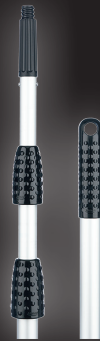


- Handle extends to 12 feet.
- Three-piece handle closes to approximately 4.5 feet.
- Light weight and durable aluminum with 5" hanger tip.
- Dual use threaded and tapered end.
- Fits Libman's broad assortment of squeegee products.

Case Pack	Weight	Case Dimensions
6	10.66	60.75 x 5.75 x 3.38



## #00613 16 Foot Extension Handle



- Handle extends to 16 feet.
- Three-piece handle closes to approximately 5.5 feet.
- Light weight and durable aluminum with 5" hanger tip.
- Dual use threaded and tapered end.
- Fits Libman's broad assortment of squeegee products.

Case Pack	Weight	Case Dimensions
6	13.25	75.13 x 5.63 x 3.38



## #00618 Threaded/Tapered Squeegee Handle



- 52" long steel handle.
- 3" handle grip with hanger hole.
- Can be used with all Libman window squeegees.
- Replacement handle for Libman #191 and #192 floor squeegees.

Case Pack	Weight	Case Dimensions
12	7.4	53.00 x 4.50 x 3.25



## #00607 On/Off Flow-Thru Handle



- Handle extends to 6 feet.
- Two-piece handle closes to approximately 3.5 feet.
- Connects to any standard hose and Libman scrubbers.
- Easy shut-off valve conserves water.
- Attaches to Libman #535 and #540 brush heads.
- Excellent for automobile and floor/wall flow-through cleaning.

Case Pack	Weight	Case Dimensions
12	12.48	44.75 x 7.50 x 5.62

## Libman does extensive in-house and independent lab testing to ensure the highest quality products.



### #00535 Dual-Sided Brush Head



- 10" x 6" dual-sided scrubbing surface.
- 2.5" long, recycled PET, staple-set fibers.
- Fits standard handles, specifically Libman #601 or as a wet scrubber with #607 flow-through handle.
- Excellent for multi-surface applications.

Case Pack	Weight	Case Dimensions
6	7.6	29.25 x 15.13 x 12.00



### #00540 Vehicle Brush Head



- 10" x 3" scrubbing surface.
- 3" long, recycled PET, staple-set fibers.
- Fits standard handles, specifically Libman #601 or as a wet scrubber with #607 flow-through handle.
- Excellent for removing bugs and dirt from vehicles, without damage.

Case Pack	Weight	Case Dimensions
6	5.6	22.25 x 15.75 x 14.25



### #00577 Large Microfiber Sponge



- 8.5" x 4" extra large contoured sponge.
- Cleans with or without chemicals.
- Cloth & sponge design to hold liquids for more efficient cleaning.
- Reusable and machine washable.
- Microfiber lifts and locks dirt.
- Excellent for automotive and other heavy-duty applications.

Case Pack	Weight	Case Dimensions
6	1.10	8.88x x8.75 x 9.38



### #00560 Vehicle Brush with Flow-Thru Handle



- 10" x 3" scrubbing surface.
- 3" long, recycled PET, staple-set fibers.
- Telescopic handle extends to 6 feet.
- Connects to any standard hose.
- Brush head is #540.
- Strong yet soft brush fibers remove bugs and dirt from vehicles, without damage.
- Excellent for reaching vehicle roofs and undercarriage.

Case Pack	Weight	Case Dimensions
4	9.5	50.00 x 8.50 x 4.75



### #00188 Telescopic Window Washer



- 10" wide scrub net and sponge head on 1 side.
- 10" rubber blade wipes streak-free.
- Aluminum handle extends to 8 feet, total product length of 8.5 feet.
- Hanger hole for storage.
- Excellent for high windows, windshields, and other hard to reach windows.

Case Pack	Weight	Case Dimensions
4	8.12	48.75 x 12.88 x 6.38



It's not just a company.  
It's our family name.



# index

ITEM	PRODUCT NAME	PAGE
#00010	Long Handle Utility Brush – White	16
#00012	Long Handle BBQ Brush – White	35
#00014	Hand and Nail Brush	36
#00015	Small Scrub Brush	15
#00016	Easy Grip Scrub Brush – White	15
#00018	Tile & Grout Brush	15
#00022	Round Bowl Brush	16
#00024	Traditional Bowl Brush	16
#00030	Dish Sponge & Soap Dispenser	37
#00034	Round Bowl Brush & Open Caddy	17
#00035	Glass/Dish Sponge	36
#00039	Bottle Brush	36
#00040	Round Bowl Brush & Closed Caddy	17
#00042	Curved Kitchen Brush	36
#00045	Kitchen Brush	36
#00048	Dish Scrub & Soap Dispenser	37
#00054	Short Handle Utility Brush – White	15
#00057	Power Scrub Brush	14
#00061	Tile & Tub Scrub	15
#00063	Steel Scrubber	34
#00064	Sponge Scrubber	34
#00066	Scrub Pad	34
#00073	Copper Scrubber	34
#00078	Lint Brush	30
#00088	8 oz. Cotton Deck Mop	20
#00091	12 oz. Cotton Deck Mop	20
#00092	Microfiber Duster	30
#00093	Vent Brush	30
#00094	18" Flexible Microfiber Duster	29
#00095	Dust Pan and Brush Set	7
#00101	Traditional Corn Broom	3
#00116	Ceiling Fan Duster	29
#00117	18" Microfiber Wet/Dry Floor Mop	25
#00118	Swivel Duster	29
#00121	12 oz. Cotton Wet Mop	20
#00122	No Knees Floor Scrub	13
#00155	Flexible Microfiber Wand	30

ITEM	PRODUCT NAME	PAGE
#00176	Microfiber Dusting Mitt	31
#00182	All-Purpose Squeegee	41
#00188	Telescopic Window Washer	43
#00189	12" Stainless Steel Squeegee	40
#00190	18" Stainless Steel Squeegee	40
#00191	Flex Blade Floor Squeegee Set	39
#00192	18" Flex Blade Floor Squeegee	39
#00193	Microfiber Window Washer	40
#00194	Microfiber & Squeegee Window Washer	40
#00195	Microfiber Dust Mop	25
#00201	Precision® Angle Broom	2
#00205	Large Precision® Angle Broom	3
#00206	Precision® Angle Broom with Dust Pan	2
#00211	Extra Large Precision® Angle Broom	3
#00228	10" Dust Pan – Deep Well	6
#00229	10" Dust Pan	6
#00231	Shaped Duster Brush	7
#00238	13" Dust Pan – Green	6
#00239	Feather Duster	30
#00244	Lambswool Duster	30
#00248	Large Precision® Angle Broom with Dust Pan	3
#00255	Oval Utility Bucket	23
#00256	3 Gallon Round Utility Bucket	23
#00499	Housekeeper Broom	2
#00502	Janitor Corn Broom	3
#00510	7" Scrub Brush	14
#00513	9" Scrub Brush	14
#00515	Soft Rubber Floor Squeegee Set	39
#00520	Long Handle Palmyra Scrub Brush	16
#00521	Long Handle Tampico Scrub Brush	16
#00522	Long Handle Utility Brush – Red	16
#00523	Short Handle Tampico Scrub Brush	15
#00524	Short Handle Utility Brush – Red	15
#00525	Iron Handle Scrub Brush	15
#00526	Counter/Bench Brush – Red	7
#00528	Long Handle BBQ Brush with Scraper – Red	35
#00529	Long Handle BBQ Brush with Scraper – Black	35

# index

ITEM	PRODUCT NAME	PAGE
#00532	Dual Surface Scrub Brush	13
#00535	Dual-Sided Brush Head	43
#00538	24" Straight Floor Squeegee	39
#00539	24" Curved Floor Squeegee	39
#00540	Vehicle Brush Head	43
#00542	24" Curved Floor Squeegee Set	39
#00547	Floor Scrub	13
#00548	Acid Brush	13
#00549	Tampico Floor Scrub	13
#00560	Vehicle Brush with Flow-Thru Handle	43
#00566	Long Handle Stainless Steel Grill Brush	35
#00567	Big Scrub Brush	14
#00568	Long Handle BBQ Brush – No Scraper	35
#00575	Short Handle Heat Resistant Grill Brush with Scraper	35
#00577	Large Microfiber Sponge	43
#00579	Microfiber Window/Mirror Cloths	31
#00580	Microfiber Cloths	31
#00581	Industrial Grade Dust Pan	6
#00584	Ceiling Fan Duster	29
#00585	24" Flexible Microfiber Duster	29
#00586	Lambswool Duster	29
#00587	Feather Duster	29
#00590	Terry Wipes	31
#00591	Shop Wipes	31
#00592	Glass Wipes	31
#00593	Shop Wipes	31
#00595	Short Handle Stainless Steel Grill Brush	35
#00597	Premium Toilet Plunger	17
#00598	Premium Toilet Plunger & Caddy	17
#00600	60" Tapered Wood Handle	42
#00601	60" Steel Handle	11
#00602	60" Zinc Thread Wood Handle	11
#00603	Steel Handle	13
#00607	On/Off Flow-Thru Handle	42
#00611	8 Foot Extension Handle	42
#00612	12 Foot Extension Handle	42
#00613	16 Foot Extension Handle	42

ITEM	PRODUCT NAME	PAGE
#00618	Threaded/Tapered Squeegee Handle	42
#00800	18" Smooth Surface Push Broom	9
#00801	24" Smooth Surface Push Broom	9
#00804	18" Multi-Surface Push Broom	9
#00805	24" Multi-Surface Push Broom	9
#00823	24" Multi-Surface Heavy Duty Push Broom	10
#00824	18" Multi-Surface Heavy Duty Push Broom	10
#00825	24" Rough Surface Heavy Duty Push Broom	10
#00826	18" Rough Surface Heavy Duty Push Broom	10
#00827	24" Multi-Surface Industrial Push Broom	11
#00829	24" Rough Surface Industrial Push Broom	11
#00847	24" Smooth Surface Industrial Push Broom	11
#00850	36" Smooth Surface Heavy Duty Push Broom	10
#00878	18" Rough Surface Push Broom	9
#00879	24" Rough Surface Push Broom	9
#00906	Dust Pan with Whisk Broom	7
#00907	Whisk Broom	7
#00911	13" Dust Pan – Red	6
#00915	Lobby Broom	2
#00916	Lobby Dust Pan (Closed Lid)	5
#00917	Lobby Dust Pan & Broom (Closed Lid)	5
#00918	Lobby Dust Pan (Open Lid)	5
#00919	Lobby Dust Pan & Broom (Open Lid)	5
#00922	24" Dust Mop	25
#00924	36" Dust Mop	25
#00926	Microfiber Fingers Dust Mop	25
#00928	13" Dust Pan – Black	6
#00929	Outdoor/Shop Scoop	5
#00933	26 Qt. Mop Bucket & Wringer	23
#00954	36" Curved Floor Squeegee Set	39
#00955	Roller Mop with Scrub Brush	24
#00958	Gator® Mop with Brush	24
#00968	Large Blue Blend Wet Mop	21
#00969	Large Finishing Wet Mop	21
#00972	Large Looped-End Wet Mop	21
#00973	Extra Large Looped-End Wet Mop	22
#00974	#16 Cut-End Cotton Wet Mop	22

# index

ITEM	PRODUCT NAME	PAGE
#00975	#24 Cut-End Cotton Wet Mop	22
#00976	#32 Cut-End Cotton Wet Mop	22
#00977	16 oz. Cotton Deck Mop	20
#00981	Steel Mop Handle	21
#00982	Quick-Change Mop Handle	21
#00983	Resin Jaw Mop Handle	21
#00985	Dust Mop Handle	25
#00988	Big Tornado® Mop	19
#00990	Big Wonder® Mop	19
#00994	Commercial Angle Broom	2
#00997	Wide Commercial Angle Broom	2
#01010	Microfiber Cleaning System	26
#01011	Microfiber Fingers Dusting Pad	26
#01012	Microfiber Stripping & Finishing Pad	26
#01013	Microfiber All-Purpose Cleaning Pad	26
#01019	Counter/Bench Brush – Black	7
#01020	Angled Toilet Bowl & Urinal Brush	17
#01022	Premium Angled Toilet Bowl Brush & Caddy	17
#01030	Whisk Broom	7
#01031	Dust Pan with Whisk Broom	7
#01038	24" Straight Floor Squeegee Set	39
#01042	Dual-Scrub Kitchen Brush	36
#01045	Dish Sponge & Soap Dispenser	37
#01047	Dish Scrub & Soap Dispenser	37
#01055	4 Gallon Bucket	23
#01056	4 Gallon Bucket With Wringer	23
#01060	18" Clamp Squeegee	40
#01061	18" Swivel Squeegee	40
#01063	Concentrated Window Cleaner	41
#01064	Ready-to-Use Window Cleaner	41
#01065	Window Cleaning All-In-One Kit	41
#01066	Squeegee Bucket	41
#01070	Shower Squeegee	41
#01075	Light Duty Sponge	33
#01076	Medium Duty Sponge	33
#01077	Heavy Duty Sponge	33
#01078	Variety Sponge Pack	33

ITEM	PRODUCT NAME	PAGE
#01079	Antibacterial Sponge	33
#01080	Heavy Duty Oversized Sponge	34
#01081	All-Purpose Resealable Sponge Pack	33
#01090	Big Scrub Brush – White	14
#01101	36" Multi-Surface Heavy Duty Push Broom	10
#02000	Wonder® Mop	19
#02010	Nitty Gritty® Roller Mop	24
#02016	Basic Roller Mop	24
#02026	Wood Floor Sponge Mop	24
#02030	Tornado® Mop	19
#02047	24oz Hardwood Floor Cleaner (RTU)	27
#02048	Hardwood Floor Cleaning System	26
#02052	1 Gallon Hardwood Floor Cleaner (RTU)	27
#02054	16oz Hardwood Spot Cleaner (RTU)	27
#02055	24oz Hardwood Polish (RTU)	27
#02083	Swivel Duster	29
#02105	Easy Grip Power Scrubber	34
#02111	3 Gallon Clean & Rinse Bucket	23
#02120	Upright Dust Pan	5
#02121	Medium Microfiber Wet Mop	22
#02122	Large A-B Looped-End Wet Mop	22
#03020	Gator® Mop	24
#03024	Microfiber Gator® Mop	24
#03103	Scrubster™ Mop	24
#04002	Freedom® Spray Mop	19
#04003	Freedom® Spray Mop Pad	19
#04005	Freedom® Floor Duster	26
#04007	16oz Freedom® Hardwood Cleaner (concentrated)	27
#04008	16oz Freedom® Multi-Surface Cleaner (concentrated)	27



## BUSINESS TERMS

**Cash Terms**

Net 30 Days

**Freight Terms**

Freight prepaid on \$1,000 or more to single destination in the continental U.S. (excluding Alaska and Hawaii) via carrier of our selection. Freight prepaid on \$2,500 to 11 western states CA, WA, OR, ID, MT, UT, CO, WY, AZ, NM, NV. Any accessorial delivery-sort, segregate and detention charges are the responsibility of the receiver.

**Returned Goods Policy**

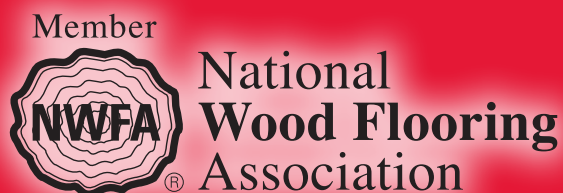
Written authorization from the Libman Company is required. Freight prepaid by customer with a 10% restocking charge. Returned goods will be accepted for credit only and must be in original cartons in restockable condition.

**Damaged Goods Policy**

Proper acknowledgement and notation of damages or shortages on original freight bill is required to submit claims. Failure to adhere to these terms will result in disallowed claims.

**Send Payments To:**

The Libman Company  
5167 Eagle Way  
Chicago, IL 61678-1051



# over a century of helping America clean

## **The more things change...**

Since The Libman Company was founded as a broom manufacturer in 1896, our company has remained the same in many ways. We have maintained a commitment to offering the highest quality products on the market. The quality of our products has continuously met—and exceeded—the highest industry standards. The Libman family also continues to produce its high quality products in the USA.

## **...the more we've changed with them**

The dedication to quality has been maintained over the generations. As the cleaning needs of the American public has expanded, so has our product line. However, product quality has never been sacrificed for the purposes of product line expansion. By remaining a reliable source for cleaning products, we have survived the ups and downs of the economy and worldwide events.

## **20th Century Growth**

The Libman Company brought creativity and improved operations during the Great Depression. Those contributions helped Libman succeed throughout the era. In fact, Libman was one of the rare companies to expand its operations during the Depression.

In the 1950s, 60s, and 70s, Libman grew and improved its product line of brooms, mops, brushes and other cleaning products in the U.S. Libman began to vertically integrate its manufacturing operations throughout the 1980's and beyond. In the late 1990's, Libman Commercial was formed and the continued expansion of the product line continues today.

## **Continuing Service**

Today, the Libman family carries on the vision of quality and customer service. We look forward to serving our existing customers and expanding into new markets in the U.S. and abroad. As their needs change, we will continue to adapt with them.





**220 N. Sheldon  
Arcola, IL 61910**

**Toll Free:** (800) 646-6262

**Phone:** (217) 268-4200

**Orders Fax:** (217) 268-3422

**Orders Email:** [orders@libman.com](mailto:orders@libman.com)

**Email:** [info@libmanpro.com](mailto:info@libmanpro.com)

**Website:** [libmanpro.com](http://libmanpro.com)